

14 Sheila Street Medlow Bath NSW

4 2 2

LOCATION - Nestled between Katoomba and Blackheath, this lovely home in Medlow Bath is only moments to the local transport corridor, bush walks and amazing vistas, yet enjoys a quiet and peaceful locale.

STYLE - Embracing a traditional mountains façade is this "Hamptons" style 2 storey home, with colorbond roof and picturesque gardens.

LAYOUT- Spacious rumpus room, leading to the oversize rear deck, family room, kitchen and dining. 4 bedrooms, all with built in robes, 2 "Juliet" balconies and a lock up 2 car garage.

FEATURES - Solid timber floors on the lower level, air-conditioning, downlights, plenty of storage and easy flow to the rear deck and yard for entertaining. Tiled and carpeted upper level, feature timber walls, split

Type : House
Price : \$ 865,000
Land Size : 645 sqm
View : <https://www.chapmanrealestate.com.au/sale/nsw/blue-mountains-surrounds/medlow-bath/residential/house/7161236>



James Simadas
02 4782 5045



Hayley Clifton
02 4782 5045

[For full version visit the website](https://www.chapmanrealestate.com.au)

<https://www.chapmanrealestate.com.au>

14 SHEILA STREET, MEDLOW BATH



Ground Floor

First Floor

INTERNAL
170 m²

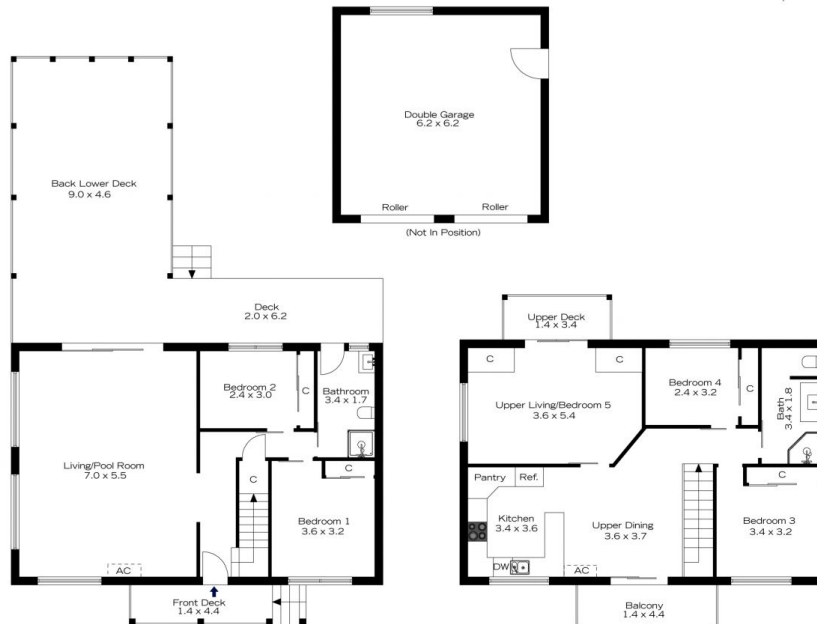
EXTERNAL
73 m²

TOTAL
243 m²



The floor plan is not to scale; measurements are indicative and in metres. All features included in this 3D plan are for inspiration purposes only. This is not an exact replica of the property or the position of exterior elements. Plans should not be relied on. Interested parties should make and rely on their own enquiries.

14 SHEILA STREET, MEDLOW BATH



Ground Floor

First Floor

INTERNAL
170 m²

EXTERNAL
73 m²

TOTAL
243 m²



The floor plan is not to scale; measurements are indicative and in metres. Exterior elements are not in position. Plans should not be relied on. Interested parties should make and rely on their own enquiries.