



### 31 Glenelgin Road Winmalee NSW

3 1 1

**LOCATION** - Peacefully set in a family friendly cul-de-sac with bush aspect to rear, just 900m to local shops, convenient to schools, parks, bushwalks, and 2.2km to Winmalee shopping village.

**STYLE** - Single level home of brick construction with tile roof.

**LAYOUT** - Generous light filled lounge room, flowing through dining room to outdoor space, three bedrooms including great size main with built in wardrobe and ceiling fan, new bathroom with double vanity and rainmaker shower head, new internal laundry.

**FEATURES** - Kitchen open to dining room with breakfast

[For full version visit the website](https://www.chapmanrealestate.com.au)

**Type** : House  
**Price** : \$ 750,000  
**Land Size** : 869.6 sqm  
**View** : <https://www.chapmanrealestate.com.au/sale/nsw/hawkesbury/winmalee/residential/house/7161232>



**Mark Poole**  
02 4751 8266

Internal Area : 113 sqm approx.  
 External Area : 38 sqm approx.  
 Total Area : 151 sqm approx.



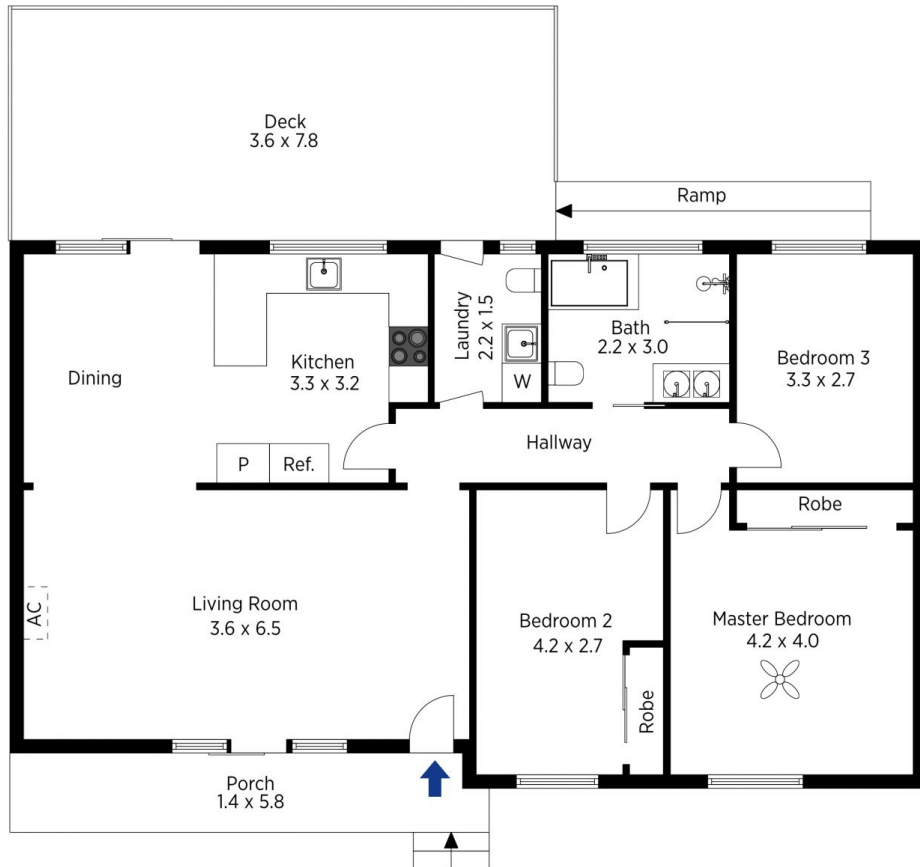
The floor plan is not to scale; measurements are indicative and in metres. All features included in this 3D plan are for inspiration purposes only. This is not an exact replica of the property or the position of exterior elements. Plans should not be relied on. Interested parties should make and rely on their own enquiries.

Produced by DIAKRIT

31 Glenelgin Road, Winmalee

Chapman

Internal Area : 113 sqm approx.  
 External Area : 38 sqm approx.  
 Total Area : 151 sqm approx.



The floor plan is not to scale; measurements are indicative and in metres. Exterior elements are not in position. Plans should not be relied on. Interested parties should make and rely on their own enquiries.

Produced by DIAKRIT

31 Glenelgin Road, Winmalee

Chapman