



82 Winbourne Road Hazelbrook NSW

2 2 3

LOCATION: Set in one of Hazelbrook's most desirable streets. A short 1km walk or drive to Hazelbrook village and train station, 450m to bus, close to local schools, day cares, doctors, parks and bush walking tracks.

STYLE: Single level Mountains cottage bursting with character, nestled on a private 1486m2 block with established gardens and park like grounds.

LAYOUT: Two generous bedrooms, the main bedroom with walk in robe and large ensuite which features a double shower. The second bedroom with built ins and ensuite access to main bathroom with European laundry. Two light filled living areas that flow off the kitchen, with the main living area featuring an open wood fire place.

FEATURES: Large kitchen with dishwasher and working

Price : \$ 828,000
Land Size : 1486 sqm
View : <https://www.chapmanrealestate.com.au/sale/nsw/blue-mountains-surrounds/hazelbrook/residential/house/7161229>



Jonathan Crisp
02 4751 8266

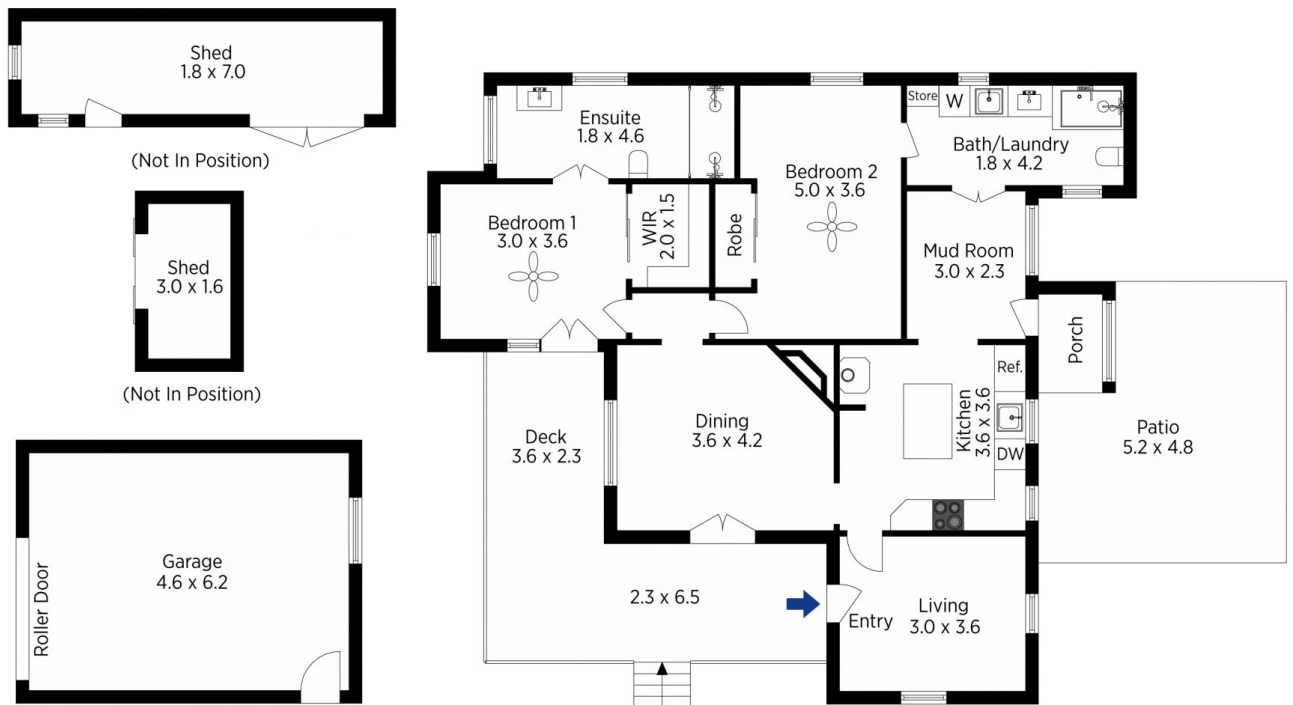


The floor plan is not to scale; measurements are indicative and in metres. All features included in this 3D plan are for inspiration purposes only. This is not an exact replica of the property or the position of exterior elements. Plans should not be relied on. Interested parties should make and rely on their own enquiries.

Produced by DIAKRIT

82 Winbourne Road, Hazelbrook

Chapman



The floor plan is not to scale; measurements are indicative and in metres. Exterior elements are not in position. Plans should not be relied on. Interested parties should make and rely on their own enquiries.

Produced by DIAKRIT

82 Winbourne Road, Hazelbrook

Chapman