



8-10 Forest Glen Road Woodford NSW

4 2 2

LOCATION - Tranquil elevated position. Bush views or leafy aspect from all windows. Quiet no-through street, but only approximately 600m walk to train station. Approximately 1,306m2 (RPData).

STYLE - High ceilings in lower living area. Spacious brick split-level home. COLORBOND® roof. Landscaped grounds with extensive water feature over bush rock, stone walls and fire pit. Hedges create a private retreat.

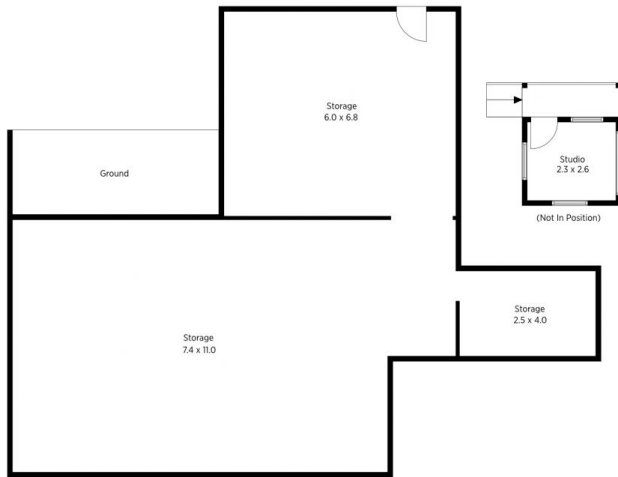
LAYOUT - 4 large bedrooms (master with walk-in robe and ensuite); others with built-ins). 2 living rooms, large kitchen with gas cooking. Laundry with additional toilet.

FEATURES - Oversized double garage with internal access. Large elevated entertainer's deck from which to enjoy the bush views. Under house significant space for

Land Size : 1306 sqm
View : <https://www.chapmanrealestate.com.au/sale/nsw/blue-mountains-surrounds/woodford/residential/house/7161225>



Jonathan Crisp
02 4751 8266



Basement Plan



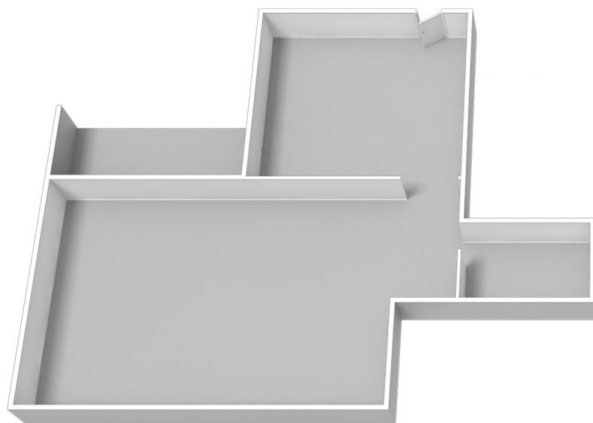
Ground Floor

The floor plan is not to scale; measurements are indicative and in metres. Exterior elements are not in position. Plans should not be relied on. Interested parties should make and rely on their own enquiries.

Produced by DIAKRIT

8-10 Forest Glen Road, Woodford

Chapman



Basement Plan



Ground Floor

The floor plan is not to scale; measurements are indicative and in metres. All features included in this 3D plan are for inspiration purposes only. This is not an exact replica of the property or the position of exterior elements. Plans should not be relied on. Interested parties should make and rely on their own enquiries.

Produced by DIAKRIT

8-10 Forest Glen Road, Woodford

Chapman