



305 Leura Mall Leura NSW

4 3 1

LOCATION - Set in the heart of Leura, just 250m to bus and 1.3km to Leura Station.

STYLE - Double story home of rendered brick and tile construction on a fully fenced 828 m2 (approx) block.

LAYOUT - The home has a very flexible floor plan and has most recently been set up for dual occupancy, however the home would also greatly suit a family! Main home (Ground Floor): Generous living area, kitchen open to dining overlooking entertainment deck and fish pond, 2 bedrooms with built ins, main with additional study room, 2nd bedroom with private deck, modern bathroom with spa bath and separate shower. 2nd home (Ground & First Floor): Separate entrance, 2 living areas, kitchen open to dining, 2 bedrooms, bathroom. Common laundry with 3rd bathroom, single lock up garage.

Type : House
Price : \$ 1,011,000
Land Size : 828.3 sqm
View : <https://www.chapmanrealestate.com.au/sale/nsw/blue-mountains-surrounds/leura/residential/house/7161221>



Jonathan Crisp
02 4751 8266

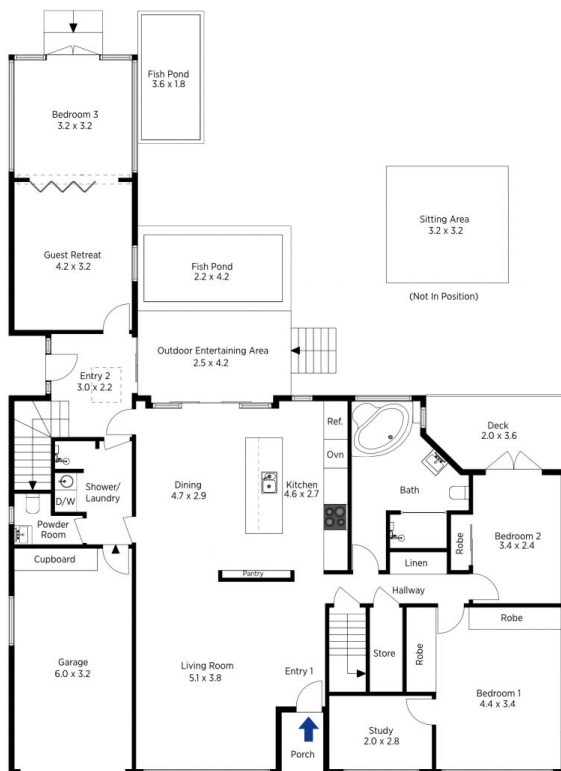
[For full version visit the website](https://www.chapmanrealestate.com.au)

<https://www.chapmanrealestate.com.au>



A 3D perspective rendering of a modern apartment floor plan. The layout includes a dining area with a white rectangular table and four chairs, a kitchen with a dark countertop and a sink, a living area with a dark grey sofa and a coffee table, a bedroom with a bed and a nightstand, and a bathroom with a toilet and a sink. The apartment features light wood flooring and white walls.

Chapman



The floor plan shows a central hallway connecting several rooms. On the left is the Kitchen/Dining area (6.0 x 4.0) with a dashed rectangle indicating a kitchen island. Above it is a staircase with a downward arrow. To the right of the Kitchen/Dining is a narrow closet labeled 'Robe'. Further right is Bedroom 4 (6.6 x 4.8), which has its own 'Robe' closet. To the right of Bedroom 4 is a bathroom (Bath, 1.8 x 2.8) containing a toilet, sink, and bathtub. To the right of the bathroom is a 'Hallway' that leads to a 'Living Room' (6.6 x 4.4) on the far right. The Living Room features a fireplace. The hallway also leads to a 'Void' area with a staircase and an upward arrow. At the top left, there is a utility area containing a 'DW' (dishwasher) and a 'Ref.' (refrigerator).

Chapman