



7 Sassafra Gully Road Springwood NSW

4 2

LOCATION - Peacefully located just 1km to the heart of Springwood Village and the convenience of its shops, cafes, services and rail, 140m to bus and popular bushwalks.

STYLE - Surprisingly spacious brick and clad 2 storey home with flat metal roof, separate studio and bush views.

LAYOUT - Main house has two generous living areas, light filled lounge with balcony and downstairs family/dining, 3 bedrooms upstairs (all with robes) original main bathroom with separate toilet, downstairs 4th bedroom (currently set up as study) internal laundry with external access & 2nd bathroom with shower & toilet, huge separate studio (3rd living area) ideal for teenage retreat, games/hobby room or further accommodation (STCA.)

FEATURES - Spacious kitchen with tile splash back, island

Type : House
Price : \$ 680,000
Land Size : 790.4 sqm
View : <https://www.chapmanrealestate.com.au/sale/nsw/hawkesbury/springwood/residential/house/7161217>



Helen Harris
02 4751 8266



Mark Poole
02 4751 8266

[For full version visit the website](https://www.chapmanrealestate.com.au)

<https://www.chapmanrealestate.com.au>



Ground Floor



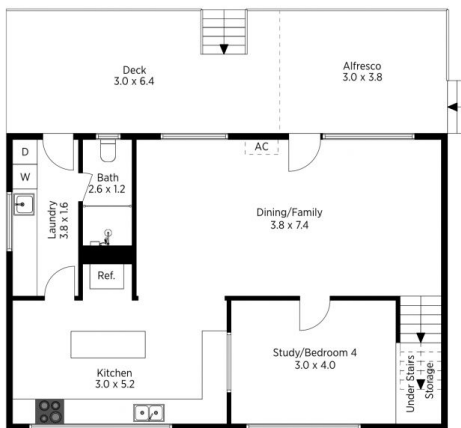
1st Floor

The floor plan is not to scale; measurements are indicative and in metres. All features included in this 3D plan are for inspiration purposes only. This is not an exact replica of the property or the position of exterior elements. Plans should not be relied on. Interested parties should make and rely on their own enquiries.

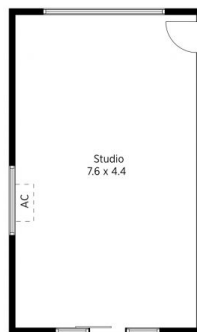
Produced by DIAKRIT

7 Sassafras Gully Road, Springwood

Chapman



Ground Floor



1st Floor

The floor plan is not to scale; measurements are indicative and in metres. Exterior elements are not in position. Plans should not be relied on. Interested parties should make and rely on their own enquiries.

Produced by DIAKRIT

7 Sassafras Gully Road, Springwood

Chapman