

## Blaxland

5 2 1

**LOCATION** - Set in a quiet one-lane street within a short stroll to East Blaxland shops, bus, school and daycare. Leafy family friendly suburb with parks, bushwalks and activities nearby.

**STYLE** - Renovated single level quality brick and tile residence set on landscaped grounds and enjoying a private and secluded feel backing to bushland.

**LAYOUT** - 2 living rooms including one "Great Room" with raked ceilings plus long sunroom, 5 bedrooms, 4 with built-ins including master suite with walk-in robe and ensuite, huge storeroom.

**FEATURES** - Reverse cycle air conditioning, 2 slow combustion fire places, modern family kitchen with double oven, polished timber floorboards, ceiling fans, picket fence at front, covered rear deck, large leafy garden with secure

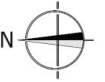
**Type** : House  
**Price** : \$ 730,000  
**Land Size** : 1119 sqm  
**View** : <https://www.chapmanrealestate.com.au/sale/nsw/blue-mountains-surrounds/blaxland/residential/house/7161215>



**Milton Player**  
02 4739 4311

[For full version visit the website](https://www.chapmanrealestate.com.au)

<https://www.chapmanrealestate.com.au>

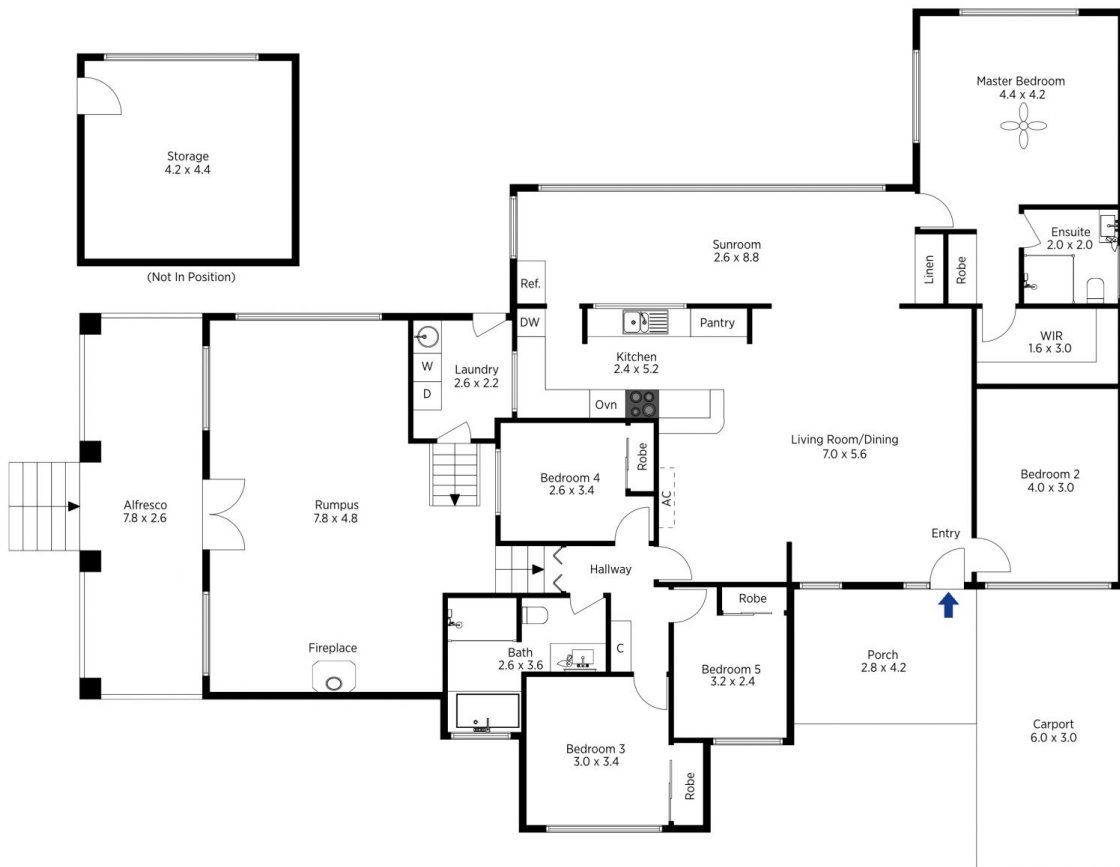


The floor plan is not to scale; measurements are indicative and in metres. All features included in this 3D plan are for inspiration purposes only. This is not an exact replica of the property or the position of exterior elements. Plans should not be relied on. Interested parties should make and rely on their own enquiries.

Produced by DIAKRIT

32 Normic Avenue, Blaxland

Chapman



The floor plan is not to scale; measurements are indicative and in metres. Exterior elements are not in position. Plans should not be relied on. Interested parties should make and rely on their own enquiries.

Produced by DIAKRIT

32 Normic Avenue, Blaxland

Chapman