



**91 St Georges Crescent Falconbridge NSW**

3 2 1

**LOCATION** - Set on a quiet no through road and hedged from the street, backing bush, with National Park at the end of the street - just 1.3km to rail and within 2km of both primary and high schools.

**STYLE** - Two storey cottage of clad construction and colorbond roof, bathed in natural light throughout.

**LAYOUT** - Great living space incorporating lounge/dining, family room and sunroom, three bedrooms including generous main, full size bathrooms on both levels of the home and dressing room that could easily be used as a study.

**FEATURES** - Updated kitchen with walk in pantry, reverse cycle AC, slow combustion wood fireplace, fantastic storage/utility rooms and separate workshop/studio ideal for hobbies, well established gardens front and back with watering system and gorgeous bush outlook off the covered rear deck, single carport.

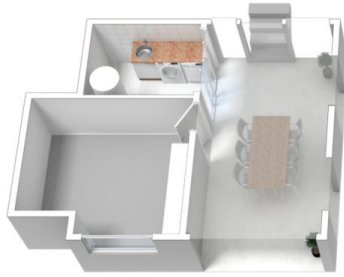
**Price** : \$ 612,500  
**Land Size** : 923.2 sqm  
**View** : <https://www.chapmanrealestate.com.au/sale/nsw/hawkesbury/falconbridge/residential/house/7161207>



**Mark Poole**  
02 4751 8266



**Helen Harris**  
02 4751 8266



Ground Floor



Second Floor



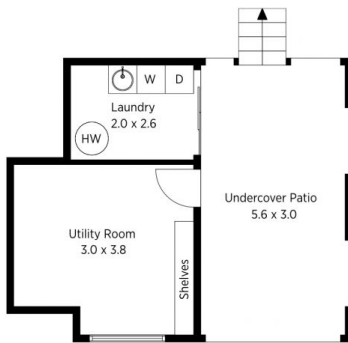
First Floor

The floor plan is not to scale; measurements are indicative and in metres. All features included in this 3D plan are for inspiration purposes only. This is not an exact replica of the property or the position of exterior elements. Plans should not be relied on. Interested parties should make and rely on their own enquiries.

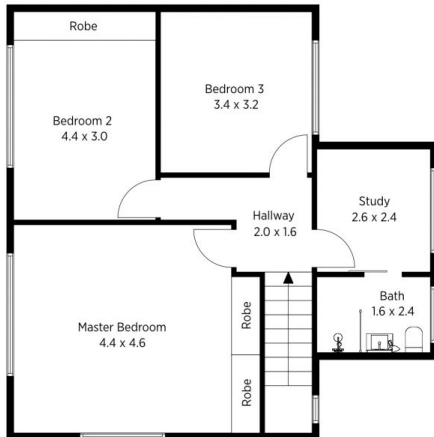
Produced by DIAKRIT

91 St Georges Crescent, Faulconbridge

Chapman



Ground Floor



Second Floor

The floor plan is not to scale; measurements are indicative and in metres. Exterior elements are not in position. Plans should not be relied on. Interested parties should make and rely on their own enquiries.

Produced by DIAKRIT



First Floor

(Not In Position)

91 St Georges Crescent, Faulconbridge

Chapman