



3/78 Heather Road Winmalee NSW

4 🛏 2 🚿 2 🚗

LOCATION - Exclusive private estate, close to shops, schools, transport, bushwalks, this home is located within approximately 38 hectares of private bushland estate.

STYLE - 2 storey contemporary architecturally designed home privately positioned on 2267m2.

LAYOUT - 2 living rooms, 4 double sized bedrooms all with built ins, huge master with walk in robe & ensuite, gourmet kitchen with large breakfast bar, internal fitted out laundry, double lock up garage & loads of off street parking.

FEATURES - Polished concrete floors, contemporary kitchen with stone benches, 900mm Smeg dual fuel oven, window splash back, custom recycled teak vanity, reverse cycle AC, powder room, open plan living flowing to multiple alfresco areas, fire pit, 12 person spa, beautiful bush views, huge grassy yard over half acre set within 38 hectares of private estate, water tank, grey water system, vehicle access to backyard. Privacy assured.

Price : \$ 1,150,000

Land Size : 2267 sqm

View : <https://www.chapmanrealestate.com.au/sale/nsw/hawkesbury/winmalee/residential/house/7161206>



Jonathan Crisp
02 4751 8266



Helen Harris
02 4751 8266

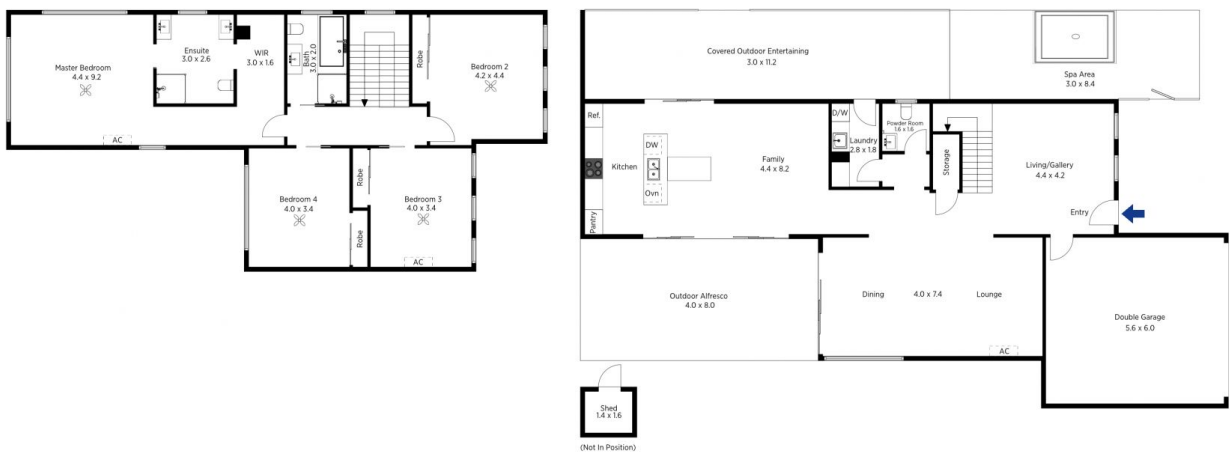


The floor plan is not to scale; measurements are indicative and in metres. All features included in this 3D plan are for inspiration purposes only. This is not an exact replica of the property or the position of exterior elements. Plans should not be relied on. Interested parties should make and rely on their own enquiries.

Produced by DIAKRIT

3/78 Heather Road, Winmalee

Chapman



The floor plan is not to scale; measurements are indicative and in metres. Exterior elements are not in position. Plans should not be relied on. Interested parties should make and rely on their own enquiries.

Produced by DIAKRIT

3/78 Heather Road, Winmalee

Chapman