



## 28 Boynton Street Blaxland NSW

4 2 2

**LOCATION** - Nestled in a leafy quiet Blue Mountains street and within a 900m walk of Blaxland shops and rail services.  
**STYLE** - Contemporary 2 storey rendered home with tiled roof set on a 708m2 (approx) parcel with a level landscaped rear yard.

**LAYOUT** - 2 Living, 4 queen size bedrooms (all with built-in robes) 2 bathrooms, galley style kitchen with wall oven and dishwasher. 2 single carports. Paved and covered outdoor alfresco. Entertainers deck.

**FEATURES** - Comfortable and practical family home, with polished floor boards downstairs, split system air-conditioning, second living/TV room and a fabulous landscaped rear yard with covered alfresco and Sandstone BBQ area. 2 large bedrooms upstairs with renovated bathroom. Under home space complete with window is

**Type** : House  
**Price** : \$ 670,000  
**Land Size** : 708 sqm  
**View** : <https://www.chapmanrealestate.com.au/sale/nsw/blue-mountains-surrounds/blaxland/residential/house/7161186>



**James Simadas**  
02 4782 5045

[For full version visit the website](https://www.chapmanrealestate.com.au)

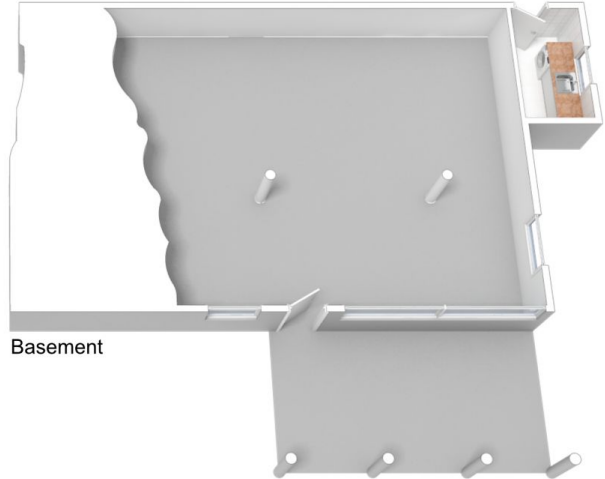
<https://www.chapmanrealestate.com.au>



Ground Floor



First Floor



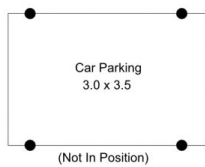
Basement

The floor plan is not to scale; measurements are indicative and in metres. All features included in this 3D plan are for inspiration purposes only. This is not an exact replica of the property or the position of exterior elements. Plans should not be relied on. Interested parties should make and rely on their own enquiries.

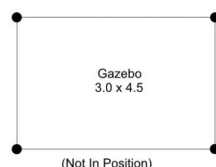
Produced by DIAKRIT

28 Boynton Street, Blaxland

Chapman



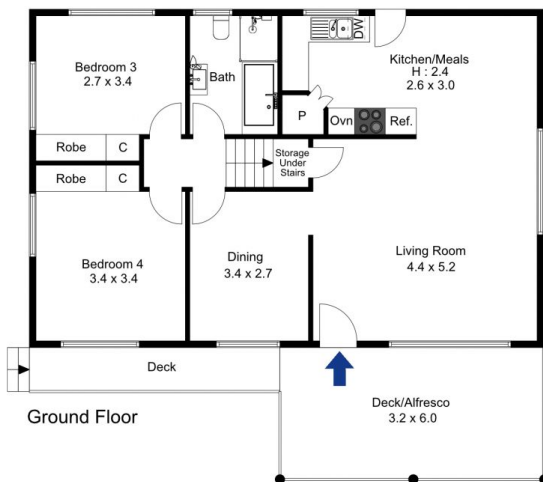
(Not In Position)



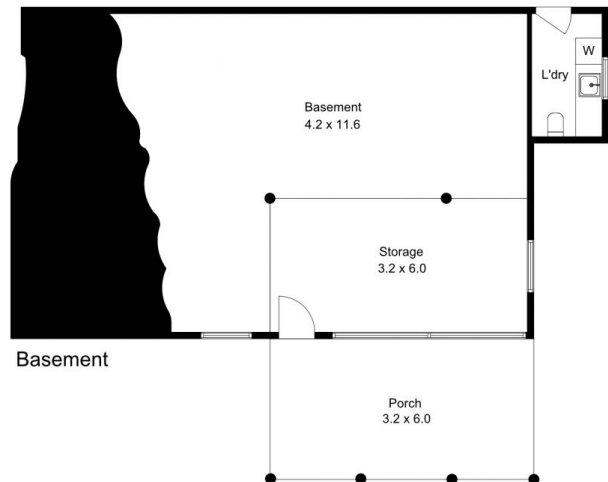
(Not In Position)



First Floor



Ground Floor



Basement

Ground

The floor plan is not to scale; measurements are indicative and in metres. Exterior elements are not in position. Plans should not be relied on. Interested parties should make and rely on their own enquiries.

Produced by DIAKRIT

28 Boynton Street, Blaxland

Chapman