



## 90 Birdwood Avenue Winmalee NSW

5 3 2

**LOCATION:** Springwood adjacent, situated in a no through road, this new construction is due for completion, minor touches and landscaping to go.

**STYLE:** Architecturally designed, offering an abundance of space and natural light over multiple levels with an unflinching commitment toward quality throughout.

**LAYOUT:** Multiple living rooms, 5 bedrooms (master with walk -in robe and ensuite, study, 3.5 bathrooms over all. Potential to re configure to accommodate the in laws.

**FEATURES:** Light filled and open kitchen with stone bench tops, large island bench, 900mm SMEG oven & s/s dishwasher, bamboo flooring, high ceilings, downlights, covered rear deck with ceiling fan and bush out look. Double LUG (6.3 x 6.3m) with internal access.

**Type** : House

**Price** : \$ 960,000

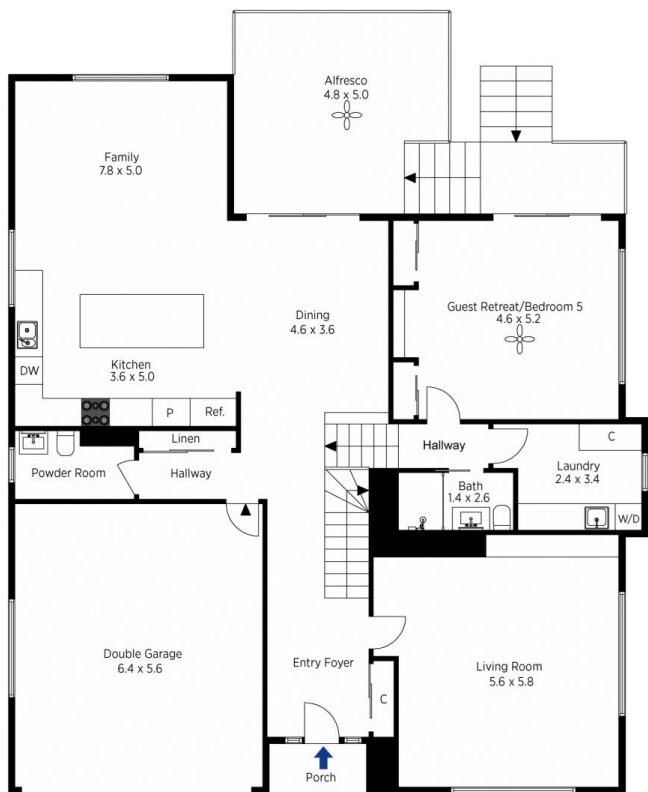
**View** : <https://www.chapmanrealestate.com.au/sale/nsw/hawkesbury/winmalee/residential/house/7161185>



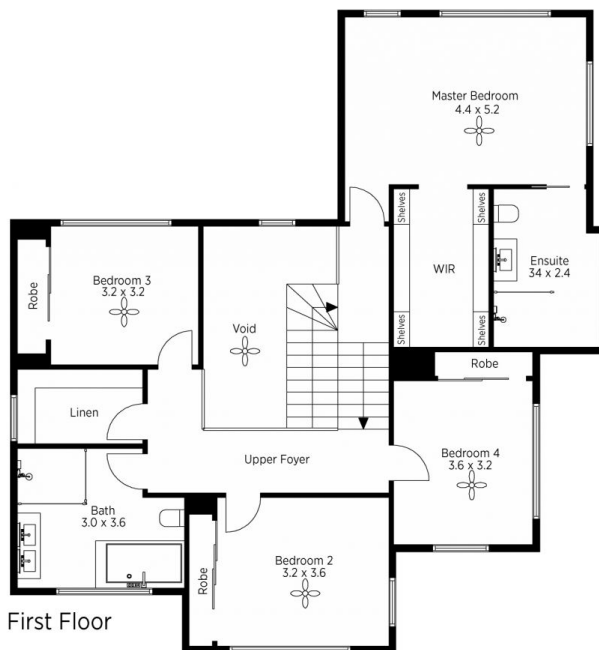
**Milton Player**  
02 4739 4311

[For full version visit the website](https://www.chapmanrealestate.com.au)

<https://www.chapmanrealestate.com.au>



Ground Floor



First Floor

The site plan and floor plan are not to scale; measurements are indicative and in metres. Bushes and trees are placed for illustration purposes. Plans should not be relied on. Interested parties should make and rely on their own enquiries.

Produced by DIAKRIT

90 Birdwood Avenue, Winmalee

Chapman



Ground Floor



First Floor

The floor plan is not to scale; measurements are indicative and in metres. All features included in this 3D plan are for inspiration purposes only. This is not an exact replica of the property or the position of exterior elements. Plans should not be relied on. Interested parties should make and rely on their own enquiries.

Produced by DIAKRIT

90 Birdwood Avenue, Winmalee

Chapman