



27 Richards Street Blaxland NSW

3 1 2

LOCATION - Incredible location within walking distance (approx. 500m) to Lennox park with tennis courts, large grounds & kids play equipment, meander less than 900m to Glenbrook lagoon and Brooklands village with an array of shops and eateries.

STYLE - Older style single level cottage in original condition. Set on a level block of approx. 558sqm.

LAYOUT - Living room, dining room, 3 bedrooms (all with built-in robes), original bathroom, 2 toilets overall.

FEATURES - Reverse cycle air conditioning, ceiling fans, slow combustion fire, timber floorboards, covered rear deck, fully fenced, garage, single carport and side access.

Disclaimer:

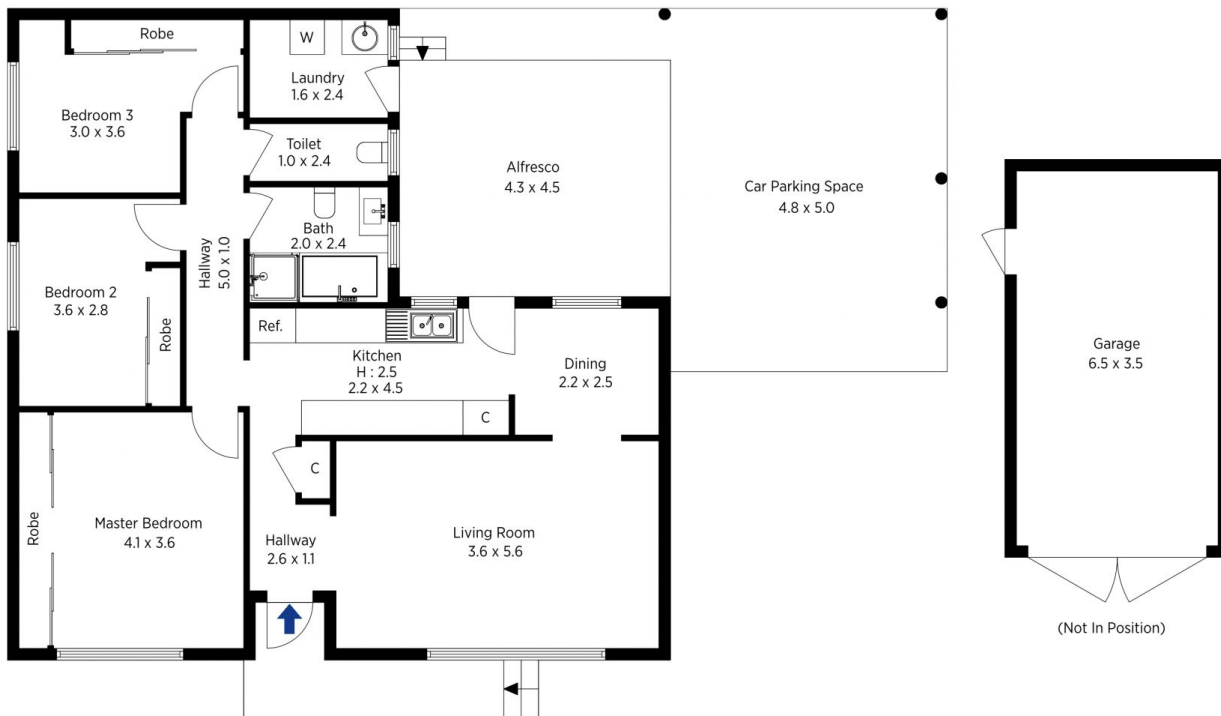
All information contained herein is gathered from sources

[For full version visit the website](https://www.chapmanrealestate.com.au)

Type : House
Price : \$ 555,000
Land Size : 558 sqm
View : <https://www.chapmanrealestate.com.au/sale/nsw/blue-mountains-surrounds/blaxland/residential/house/7161179>



Milton Player
02 4739 4311



The floor plan is not to scale; measurements are indicative and in metres. Exterior elements are not in position. Plans should not be relied on. Interested parties should make and rely on their own enquiries.

Produced by DIAKRIT

27 Richards street, Blaxland

Chapman



The floor plan is not to scale; measurements are indicative and in metres. All features included in this 3D plan are for inspiration purposes only. This is not an exact replica of the property or the position of exterior elements. Plans should not be relied on. Interested parties should make and rely on their own enquiries.

Produced by DIAKRIT

27 Richards street, Blaxland

Chapman