



57 Bridge Road Blaxland NSW

4 2 2

LOCATION - Situated approx. 1.1km from Blaxland Public School, shops, medical centre and rail. Nested on a leafy near level block of approximately 923m².

STYLE - Mid - late 1960's red brick family home with many original features. Set well back from the street (approx. 22m), offering privacy and space and huge potential within the home and gardens.

LAYOUT - Uncomplicated single level layout, large living room, 4 bedrooms (including master with ensuite and walk-in robe). Kitchen with separate meals area, laundry room off covered rear deck, 2 bathrooms overall.

FEATURES - Functional kitchen with ample storage and bench space, timber floorboards, timber windows, air conditioner, Rinnai gas heater, federation style main bathroom, 1 x built-in robe, original ensuite, covered front

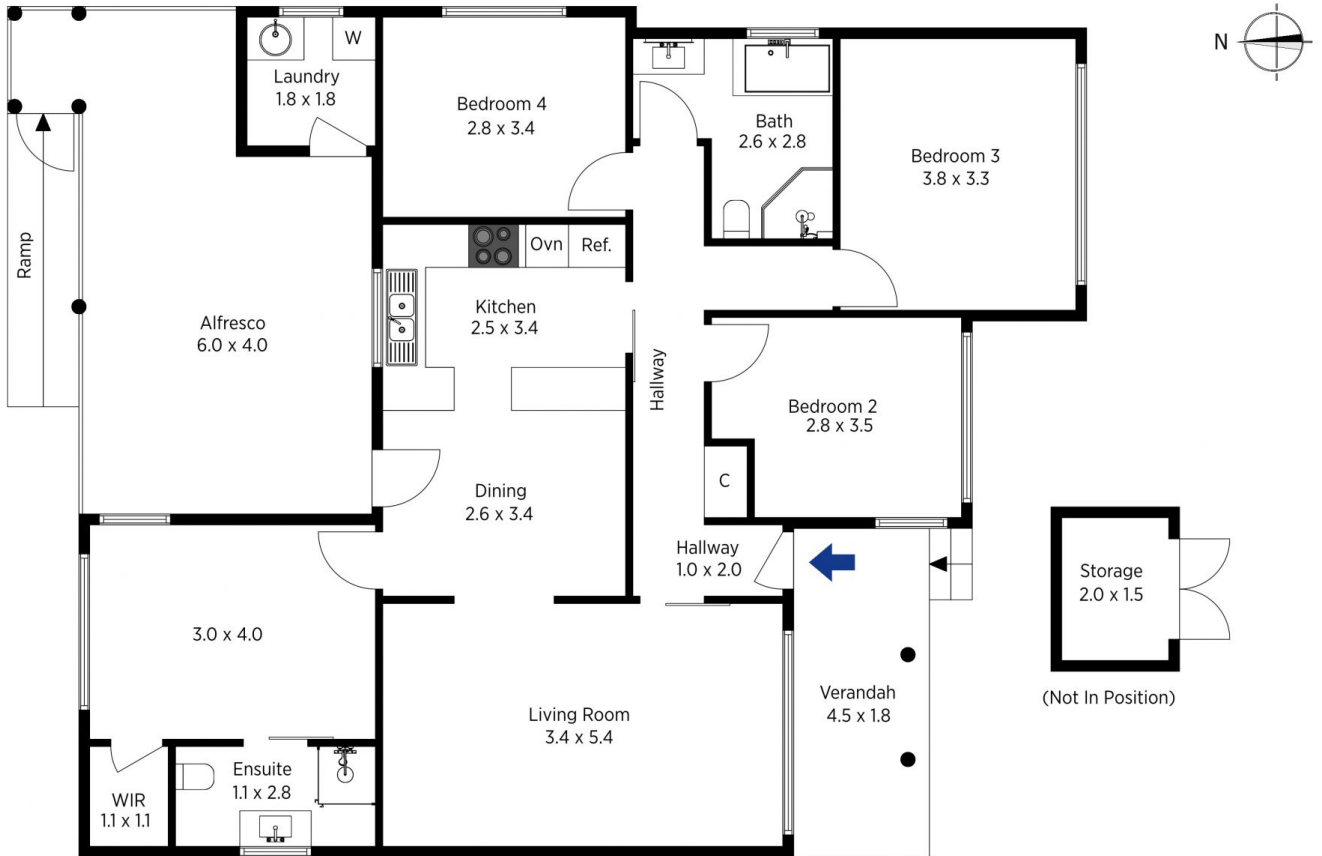
Type : House
Price : \$ 680,000
Land Size : 923 sqm
View : <https://www.chapmanrealestate.com.au/sale/nsw/blue-mountains-surrounds/blaxland/residential/house/7161176>



Milton Player
02 4739 4311

[For full version visit the website](https://www.chapmanrealestate.com.au)

<https://www.chapmanrealestate.com.au>



The floor plan is not to scale; measurements are indicative and in metres. Exterior elements are not in position. Plans should not be relied on. Interested parties should make and rely on their own enquiries.

Produced by DIAKRIT

57 Bridge Road, Blaxland

Chapman



The floor plan is not to scale; measurements are indicative and in metres. All features included in this 3D plan are for inspiration purposes only. This is not an exact replica of the property or the position of exterior elements. Plans should not be relied on. Interested parties should make and rely on their own enquiries.

Produced by DIAKRIT

57 Bridge Road, Blaxland

Chapman