



50A Minni Ha Ha Road Katoomba NSW

3 1 2

LOCATION - Set in a peaceful North Katoomba enclave on a generous 1,012sqm (approx.) block. This home enjoys a leafy surround within moments of Minni Ha Ha Falls walk, a bus stop less than 30m from the front door and only a short 3.5km drive to Katoomba train station and the amenities of Katoomba CBD.

STYLE - Presenting the opportunity to modernise and turn into a comfortable family home, this c1970s brick and tile residence drinks in the natural light with large picture windows throughout.

LAYOUT - As is, this home has a great and versatile floorplan. The accommodation includes, 3 spacious bedrooms (main with built-in), a huge combined living and

Type : House
Land Size : 1012 sqm
View : <https://www.chapmanrealestate.com.au/sale/nsw/blue-mountains-surrounds/katoomba/residential/house/7161173>



Jonathan Crisp
02 4751 8266

[For full version visit the website](https://www.chapmanrealestate.com.au)

<https://www.chapmanrealestate.com.au>

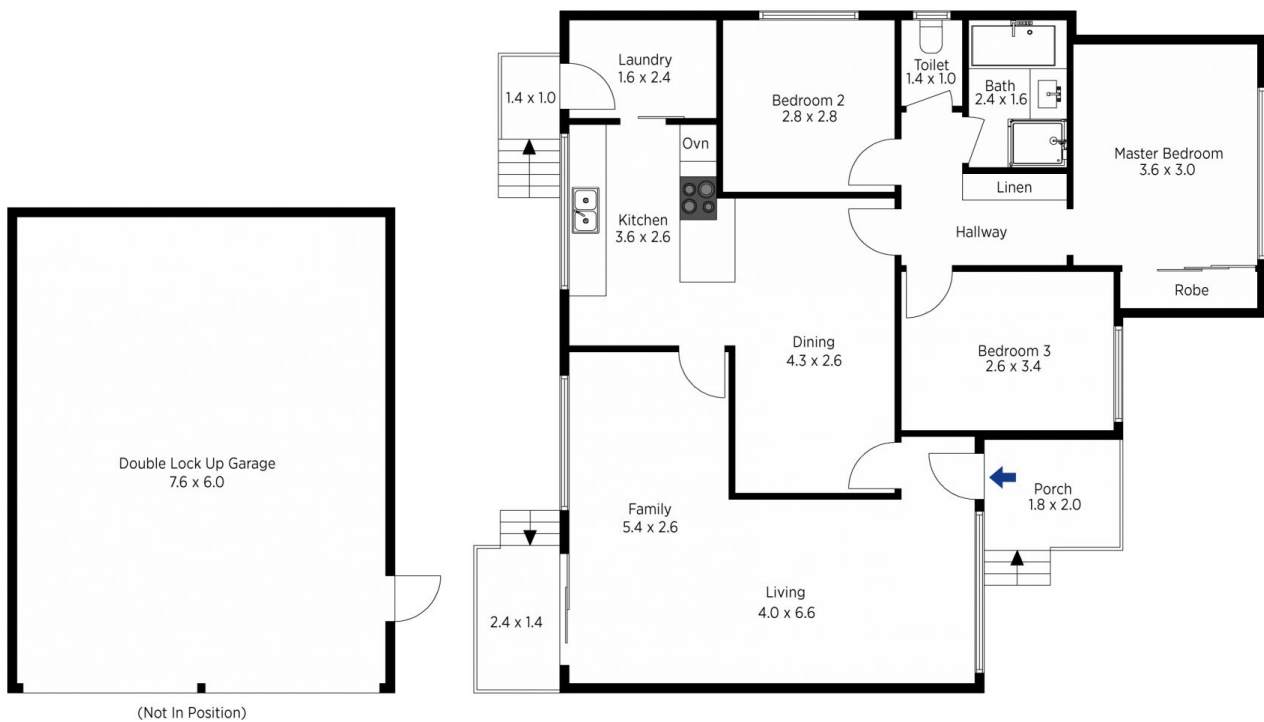


The floor plan is not to scale; measurements are indicative and in metres. All features included in this 3D plan are for inspiration purposes only. This is not an exact replica of the property or the position of exterior elements. Plans should not be relied on. Interested parties should make and rely on their own enquiries.

Produced by DIAKRIT

50A Minni Ha Ha Road, Katoomba

Chapman



The floor plan is not to scale; measurements are indicative and in metres. Exterior elements are not in position. Plans should not be relied on. Interested parties should make and rely on their own enquiries.

Produced by DIAKRIT

50A Minni Ha Ha Road, Katoomba

Chapman