



79 Chapman Parade Faulconbridge NSW

3 2 2

LOCATION - Popular Faulconbridge location with easy access to highway, walk to schools and bus, close to bush walks and walking distance to Norman Lindsay Gallery and cafe.

STYLE - Single level brick home with tile roof set on over and acre (approx 4,533m²) of land with back deck and bush outlook.

LAYOUT - Three living spaces, formal lounge, separate family/dining area and converted garage into sunroom with huge walk through storage/workshop area with direct access to double car port. 3 bedrooms all with built in robes, master with ensuite, additional main bathroom with separate toilet and laundry with external access.

[For full version visit the website](https://www.chapmanrealestate.com.au)

Type : House
Price : \$ 678,212
Land Size : 4533 sqm
View : <https://www.chapmanrealestate.com.au/sale/nsw/hawkesbury/faulconbridge/residential/house/7161161>



Helen Harris
02 4751 8266



Claudia Hayes
02 4751 8266

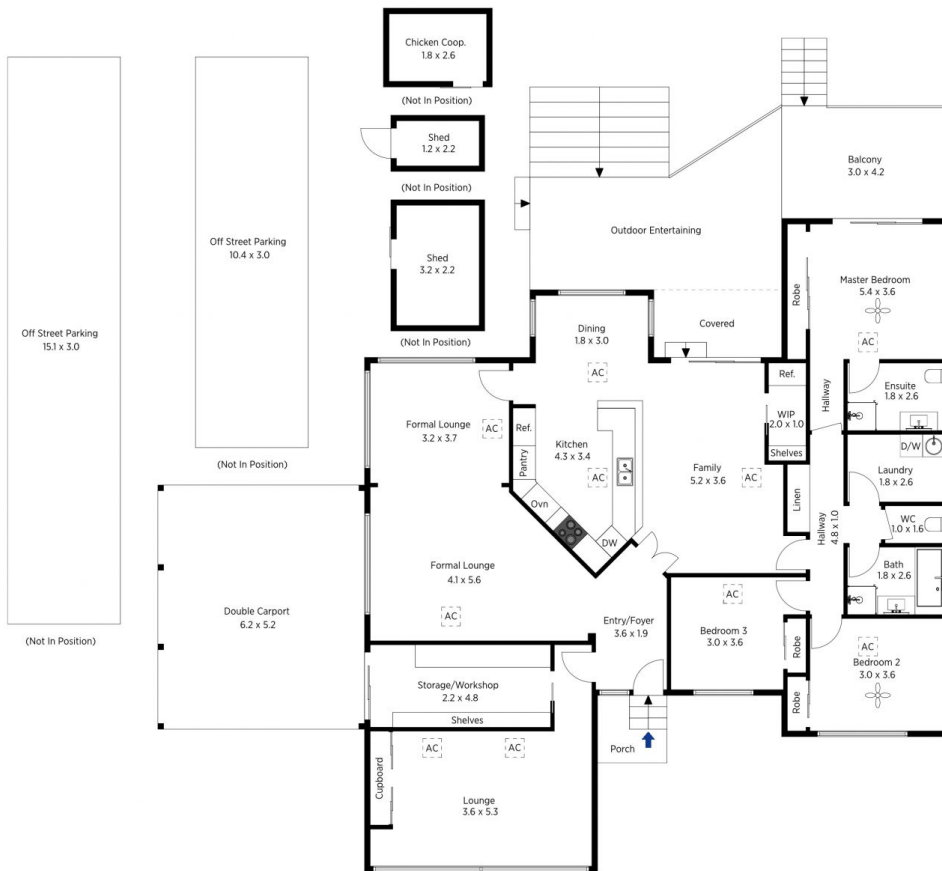


The floor plan is not to scale; measurements are indicative and in metres. All features included in this 3D plan are for inspiration purposes only. This is not an exact replica of the property or the position of exterior elements. Plans should not be relied on. Interested parties should make and rely on their own enquiries.

Produced by DIAKRIT

79 Chapman Parade, Faulconbridge

Chapman



The floor plan is not to scale; measurements are indicative and in metres. Exterior elements are not in position. Plans should not be relied on. Interested parties should make and rely on their own enquiries.

Produced by DIAKRIT

79 Chapman Parade, Faulconbridge

Chapman