



54 Emu Plains Road Mount Riverview NSW

4 3 1

LOCATION - The lovely hamlet of Mt Riverview - sitting on the high side of the street with "views to the city?". Bus stop at the door, 850m to Mt Riverview Primary School, Blaxland rail and shops within 4.2kms.

STYLE - Solid double brick home built with love by the owners in 1971, with original features and set on 771m² (approximately) corner block.

LAYOUT - Generous light filled living with views, tiled entry and hallway, to the left original kitchen with dining leading out to enclosed verandah and courtyard, further down the hallway the laundry with extra bathroom, 2 bedrooms (main with walk-in wardrobe), main bathroom and plenty of cupboard storage throughout the home. Downstairs; Office with bathroom and large rumpus/games/storage room leading out to undercover area and lovely established

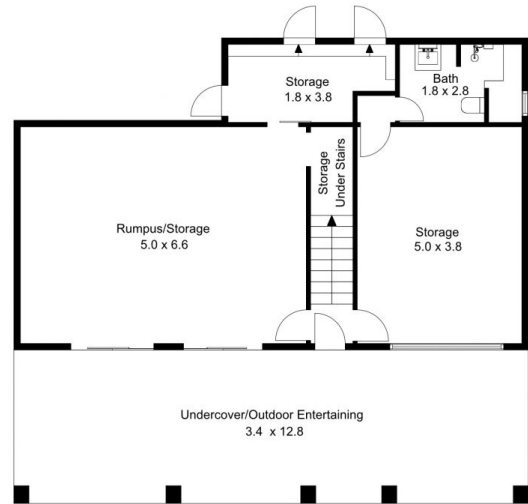
Type : House
Price : \$ 680,000
Land Size : 771 sqm
View : <https://www.chapmanrealestate.com.au/sale/nsw/hawkesbury/mount-riverview/residential/house/7161157>



Jonathan Crisp
02 4751 8266

[For full version visit the website](https://www.chapmanrealestate.com.au)

<https://www.chapmanrealestate.com.au>



The floor plan is not to scale; measurements are indicative and in metres. Exterior elements are not in position. Plans should not be relied on. Interested parties should make and rely on their own enquiries.

Produced by DIAKRIT

54 Emu Plains Road, Mount Riverview

Chapman



The floor plan is not to scale; measurements are indicative and in metres. All features included in this 3D plan are for inspiration purposes only. This is not an exact replica of the property or the position of exterior elements. Plans should not be relied on. Interested parties should make and rely on their own enquiries.

Produced by DIAKRIT

54 Emu Plains Road, Mount Riverview

Chapman