

## 20 Yoogali Terrace Blaxland NSW

3 2 1

**LOCATION** - Perched on a stunning bush block of approx. 697sqm, fantastic north aspect to rear, handy to local shops and public school (within 1.1km or 2 min. drive). Situated in a convenient and tranquil location.

**STYLE** - Dual storey home offering a solid foundation to realise your own vision and style, of brick and tile roof construction.

**LAYOUT** - Entry level encompasses north facing living room, open kitchen and dining, 3 bedrooms with built-in robes and bathroom. Lower level is comprised of 2 living areas (1 with built-in bar), huge utility room ideal for teenagers' retreat, bathroom and dry storage room.

**FEATURES** - Functional light-filled kitchen, loads of storage and bench space with elevated bush views, lounge room with high ceilings, ducted air upstairs, 3-way

**Type** : House  
**Price** : \$ 606,250  
**Land Size** : 697 sqm  
**View** : <https://www.chapmanrealestate.com.au/sale/nsw/blue-mountains-surrounds/blaxland/residential/house/7161156>

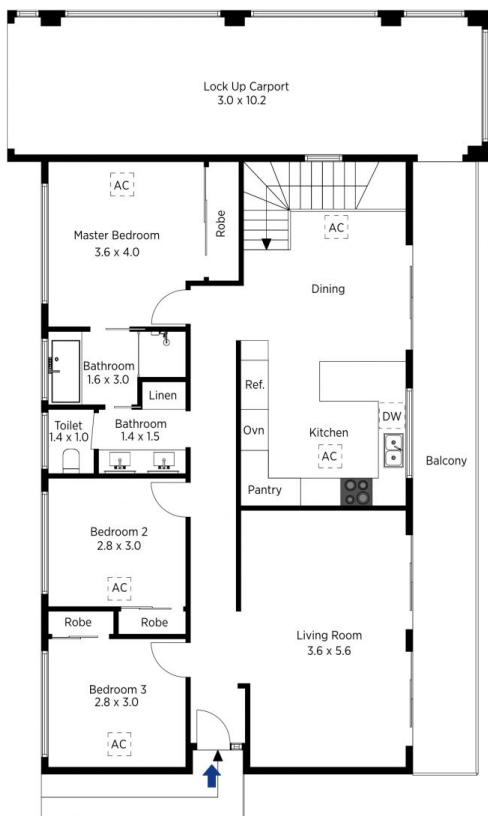


**Milton Player**  
02 4739 4311

[For full version visit the website](https://www.chapmanrealestate.com.au)

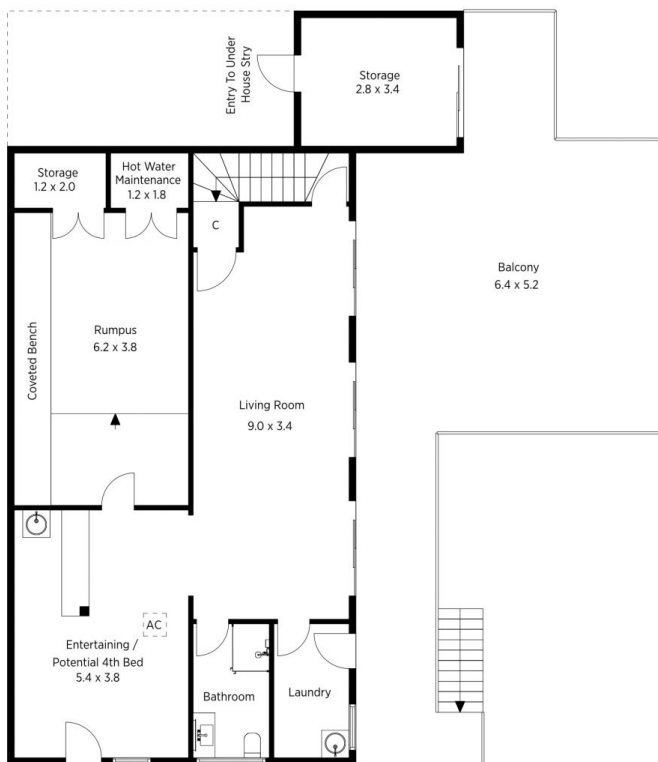
<https://www.chapmanrealestate.com.au>





First Floor

The floor plan is not to scale; measurements are indicative and in metres. Exterior elements are not in position. Plans should not be relied on. Interested parties should make and rely on their own enquiries.



Ground Floor

Produced by DIAKRIT

20 Yoogali Terrace, Blaxland



First Floor

The floor plan is not to scale; measurements are indicative and in metres. All features included in this 3D plan are for inspiration purposes only. This is not an exact replica of the property or the position of exterior elements. Plans should not be relied on. Interested parties should make and rely on their own enquiries.



Ground Floor

Produced by DIAKRIT

20 Yoogali Terrace, Blaxland

