



## 25 Florabella Street WARRIMOO NSW

4 2 2

**LOCATION:** Coveted South side location, set well back off the road, a private & intimate setting on a glorious farm style garden of approx. 1018sqm.

**STYLE:** Enjoying spectacular bush views. A warm & inviting home with modern amenities combined with the use of natural wood, stone and metal to achieve a rustic, contemporary style.

**LAYOUT:** Split level in design, the floorplan offers an open kitchen, 2 living areas, 4 bedrooms and spacious bathroom. Separate studio with polished concrete floors, complete with kitchenette and bathroom.

**FEATURES:** Industrial style open kitchen with 900mm oven, stunning bush outlook, large windows, wood fireplace, air conditioning, polished timber floors, high ceilings, down lights, renovated bathrooms, partially

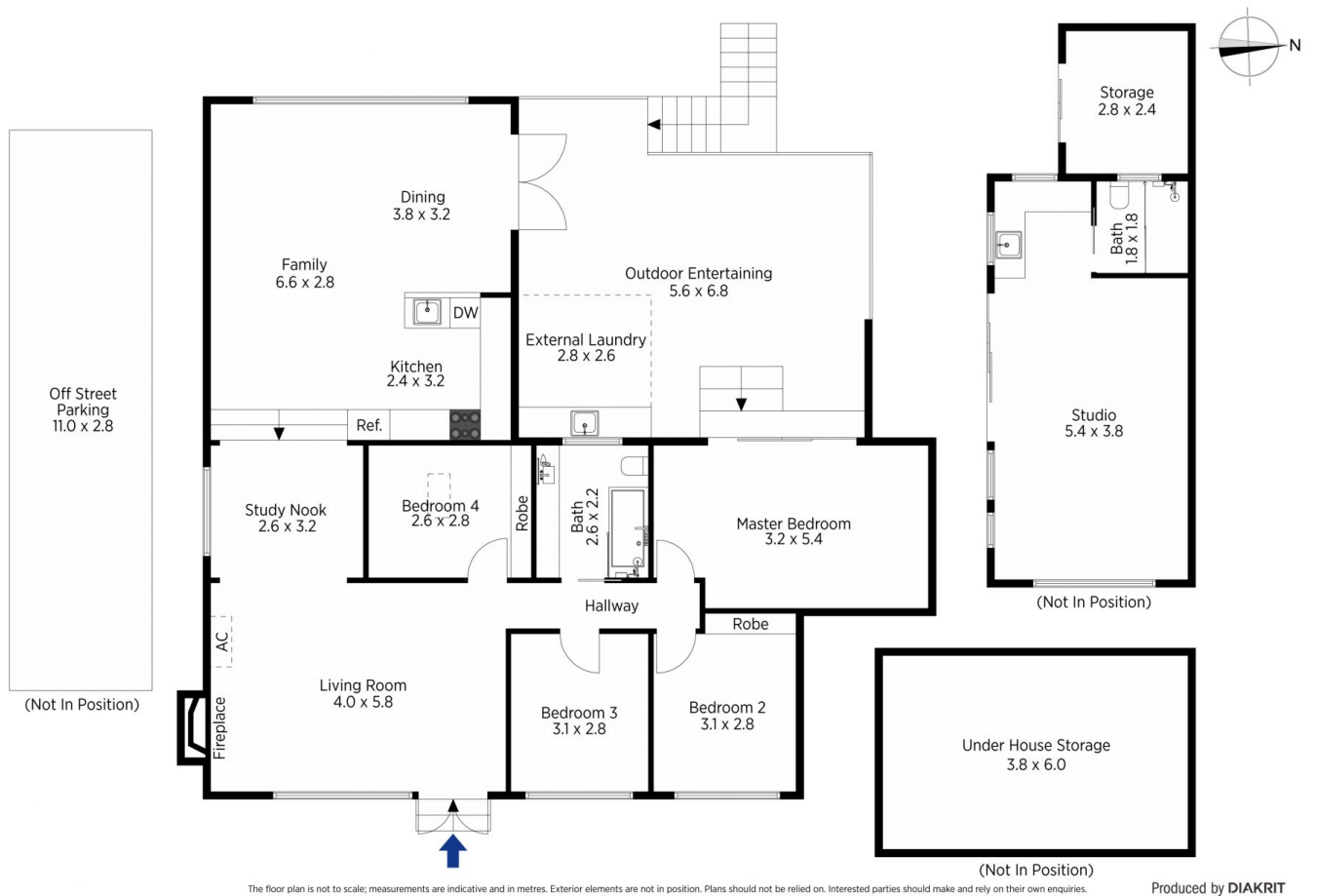
**Type** : House  
**Price** : \$ 770,000  
**Land Size** : 1018 sqm  
**View** : <https://www.chapmanrealestate.com.au/sale/nsw/hawkesbury/warrimoo/residential/house/7161152>



**Milton Player**  
02 4739 4311

[For full version visit the website](https://www.chapmanrealestate.com.au)

<https://www.chapmanrealestate.com.au>



25 Florabella Street, Warrimoo

Chapman



25 Florabella Street, Warrimoo

Chapman