

5 Badgery Crescent Lawson NSW

3 2 2

LOCATION - Within easy reach of local bowling club, station, shops, cafes, restaurants and services are all reached on a level, short walk. Nearby too are Lawson pool and the waterfalls.

STYLE - Welcome to "Ellamatta", an indigenous name for "My Home" - Circa 1910. This beautiful period residence of significant proportions oozes appeal, from the wrap around veranda, classic timber cladding and metal roof, with an outstanding street presence.

LAYOUT - Formal and informal living, 3 Bedrooms, updated bathroom, powder room, laundry and country-style kitchen. The functional layout offers a myriad of uses for the discerning buyer, including a large downstairs space with its own private entry accessing another 3 versatile rooms and additional bathroom/laundry. Plenty of off-street

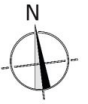
Type : House
Price : \$ 1,180,000
Land Size : 1120 sqm
View : <https://www.chapmanrealestate.com.au/sale/nsw/blue-mountains-surrounds/lawson/residential/house/7161144>



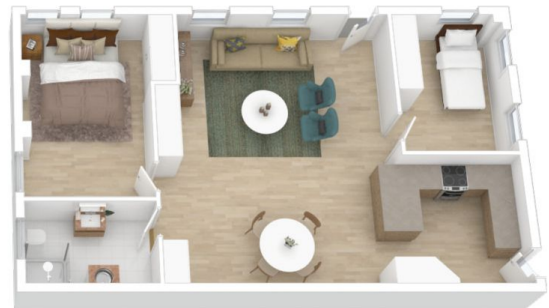
James Simadas
02 4782 5045

[For full version visit the website](https://www.chapmanrealestate.com.au)

<https://www.chapmanrealestate.com.au>



Ground Floor



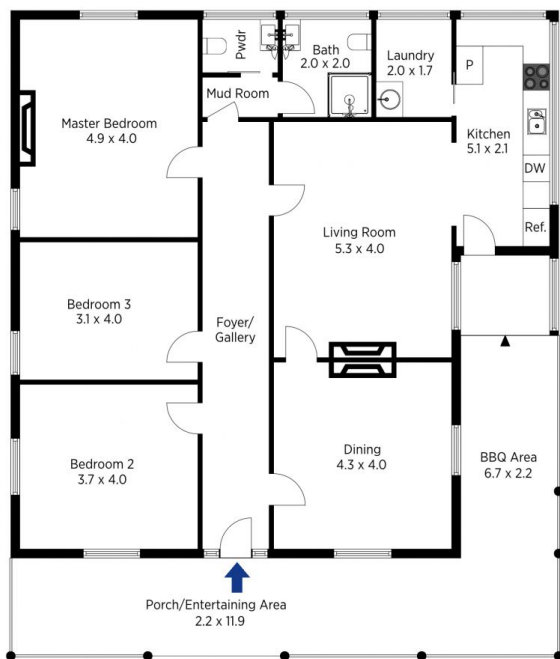
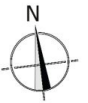
Lower Ground

The floor plan is not to scale; measurements are indicative and in metres. All features included in this 3D plan are for inspiration purposes only. This is not an exact replica of the property or the position of exterior elements. Plans should not be relied on. Interested parties should make and rely on their own enquiries.

Produced by DIAKRIT

5 Badgery Crescent, Lawson

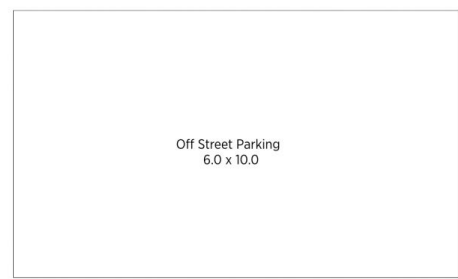
Chapman



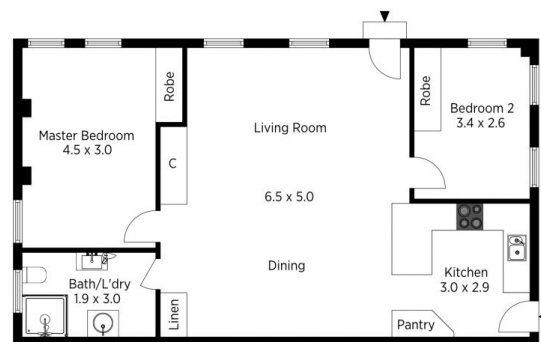
Ground Floor



(Not In Position)



(Not In Position)



Lower Ground

The floor plan is not to scale; measurements are indicative and in metres. Exterior elements are not in position. Plans should not be relied on. Interested parties should make and rely on their own enquiries.

Produced by DIAKRIT

5 Badgery Crescent, Lawson

Chapman