



104 Lee Road Winmalee NSW

4 2 3

LOCATION - Set high in a convenient location, close to shops, transport, schools & bushwalks.

STYLE - Single level modern brick & tile, with level land around the home.

LAYOUT - 3 living rooms, 4 double sized bedrooms all with built ins, main with ensuite, open plan kitchen/family flows onto deck, internal laundry, double lock up garage & carport.

FEATURES - Ducted air conditioning, recent renovations, including paint & carpet, 900mm cooktop & double oven, LED lighting, solar panels, low maintenance gardens with feature stone walls, lovely warm & homely modern feel throughout.

Disclaimer:

[For full version visit the website](https://www.chapmanrealestate.com.au)

Type : House
Price : \$ 700,000
Land Size : 737.5 sqm
View : <https://www.chapmanrealestate.com.au/sale/nsw/hawkesbury/winmalee/residential/house/7161120>



Jonathan Crisp
02 4751 8266

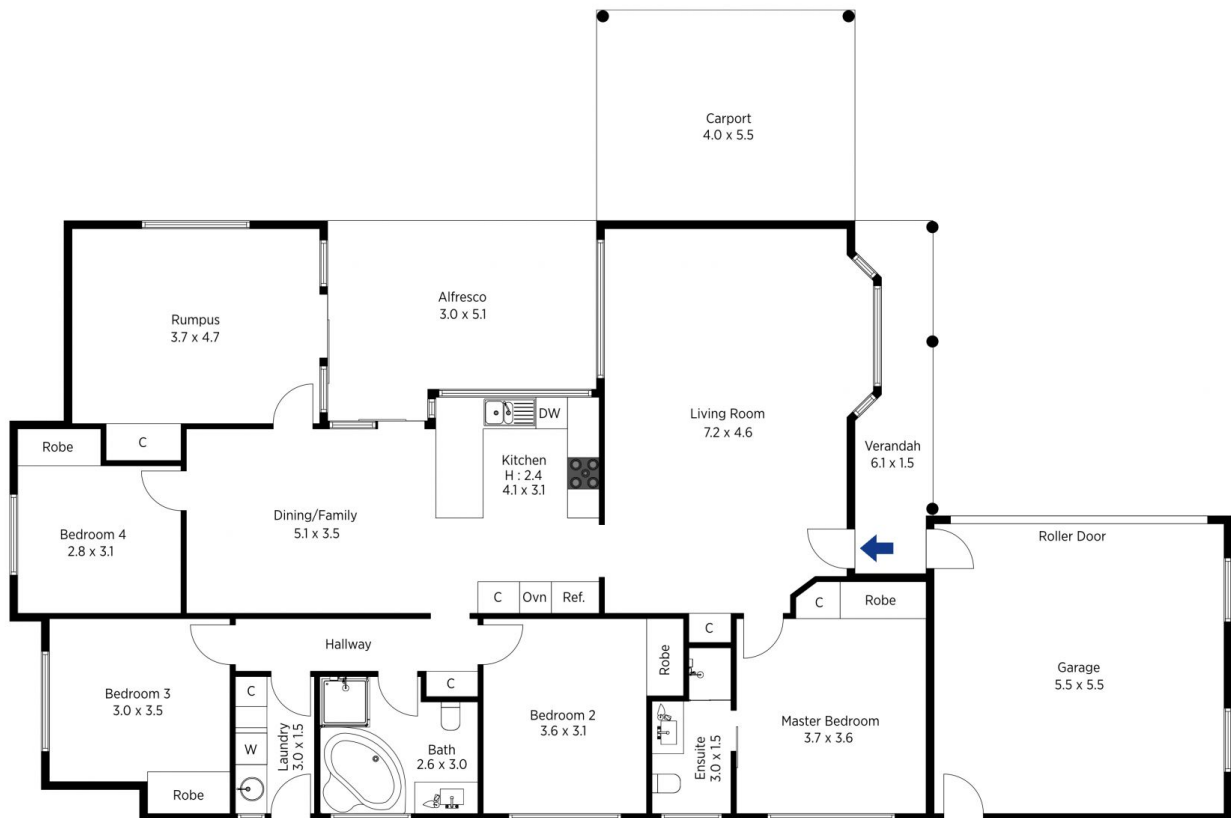


The floor plan is not to scale; measurements are indicative and in metres. All features included in this 3D plan are for inspiration purposes only. This is not an exact replica of the property or the position of exterior elements. Plans should not be relied on. Interested parties should make and rely on their own enquiries.

Produced by DIAKRIT

104 Lee Road, Winmalee

Chapman



The floor plan is not to scale; measurements are indicative and in metres. Exterior elements are not in position. Plans should not be relied on. Interested parties should make and rely on their own enquiries.

Produced by DIAKRIT

104 Lee Road, Winmalee

Chapman