

40 Scott Avenue Leura NSW

4 3 2

LOCATION: Positioned in an extremely sought after pocket on South side of Leura, this sensational property enjoys a peaceful setting, yet is still close to Leura Mall, local schools, parks, rail & world class Blue Mountains bushwalks.

STYLE: Tri Level and double brick throughout and set on an impressive 1192m2 (approx.) block. Beautifully landscaped to blend with the tree lined backdrop and established gardens. Large and picturesque grassed area to exhaust the kids and pets.

LAYOUT: 3 separate living spaces, 4 bedrooms all with built in robes, grand master with ensuite and walk in robe, generous family sized bathroom with toilet & bidet and a

Type : House
Price : \$ 1,240,000
Land Size : 1192 sqm
View : <https://www.chapmanrealestate.com.au/sale/nsw/blue-mountains-surrounds/leura/residential/house/7161116>

[For full version visit the website](https://www.chapmanrealestate.com.au)



Chris Rayner
02 4739 6200



Kate Spence
02 4739 6200

40 SCOTT AVENUE, LEURA



First/Ground Floor



Lower Ground Floor

INTERNAL
322 m²

EXTERNAL
114 m²

TOTAL
436 m²

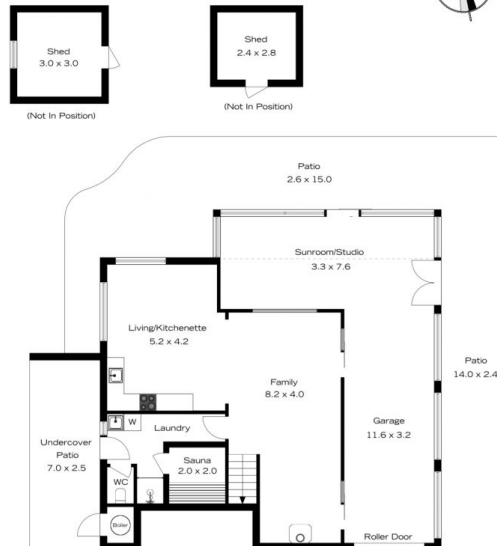


The floor plan is not to scale; measurements are indicative and in metres. All features included in this 3D plan are for inspiration purposes only. This is not an exact replica of the property or the position of exterior elements. Plans should not be relied on. Interested parties should make and rely on their own enquiries.

40 SCOTT AVENUE, LEURA



First/Ground Floor



Lower Ground Floor

INTERNAL
322 m²

EXTERNAL
114 m²

TOTAL
436 m²



The floor plan is not to scale; measurements are indicative and in metres. Exterior elements are not in position. Plans should not be relied on. Interested parties should make and rely on their own enquiries.