



10 Currawong Avenue Valley Heights NSW

4 2 2

LOCATION: Peacefully located in a popular leafy location yet only moments to Valley Heights train station and bus stop, short stroll to Blue Mountains Grammar School, easy access to Great Western Highway and within 1.5km drive to Springwood Village.

STYLE: Private mostly single level cottage home with colour bond roof, tandem garage and work shop underneath sitting on a delightful, maintained 700m² approx. block.

LAYOUT: Two great size living rooms including cosy main lounge room and family/dining room area that flows onto the kitchen. Four bedrooms, three with built in robes and master with bright updated ensuite. Generous main

Type : House
Price : \$ 948,000
Land Size : 700 sqm
View : <https://www.chapmanrealestate.com.au/sale/nsw/hawkesbury/valley-heights/residential/house/7161112>



Claudia Hayes
02 4751 8266

[For full version visit the website](https://www.chapmanrealestate.com.au)

<https://www.chapmanrealestate.com.au>

10 CURRAWONG AVENUE, VALLEY HEIGHTS



Ground Floor

INTERNAL
174 m²

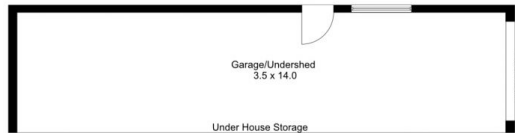
EXTERNAL
58 m²

TOTAL
232 m²

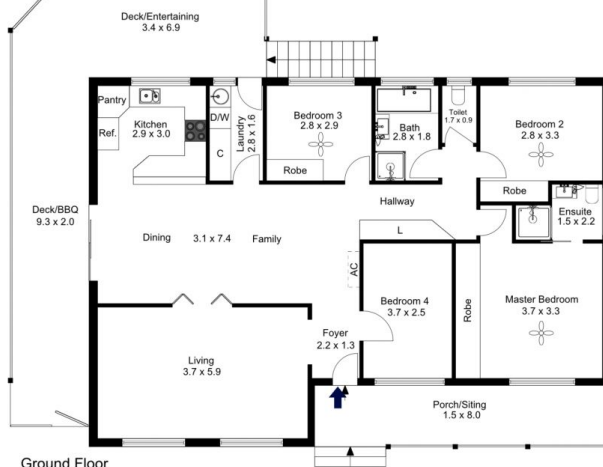


The floor plan is not to scale; measurements are indicative and in metres. All features included in this 3D plan are for inspiration purposes only. This is not an exact replica of the property or the position of exterior elements. Plans should not be relied on. Interested parties should make and rely on their own enquiries.

10 CURRAWONG AVENUE, VALLEY HEIGHTS



Basement



Ground Floor

INTERNAL
174 m²

EXTERNAL
58 m²

TOTAL
232 m²



The floor plan is not to scale; measurements are indicative and in metres. Exterior elements are not in position. Plans should not be relied on. Interested parties should make and rely on their own enquiries.