



6 Plains View Crescent Mount Riverview NSW

5 3 2

LOCATION - Embracing the tree change, tucked away in a quiet street whilst maintaining convenience to local shops, transport, bush walks and parks. An easy 10 minute drive to Blaxland Shops and Supermarket.

STYLE - Sprawling multi-level brick and tile residence perfectly positioned on established cascading gardens of approximately 2,200m², taking in breathtaking views overlooking Penrith Lakes and Sydney on the horizon.

LAYOUT - 2 living rooms, 1 theatre, 5 bedrooms, master suite with ensuite and walk in robe, generous guest bedroom retreat, 3 queen size rooms on the upper level (2 with built in robes), study nook tucked away on the upper level with the main study to the side of the entrance hall, light filled kitchen and dining looking out to the magnificent views, 3 bathrooms, sauna, external powder room, two

Type : House
Price : \$ 1,350,000
Land Size : 2235.29 sqm
View : <https://www.chapmanrealestate.com.au/sale/nsw/hawkesbury/mount-riverview/residential/house/7161111>



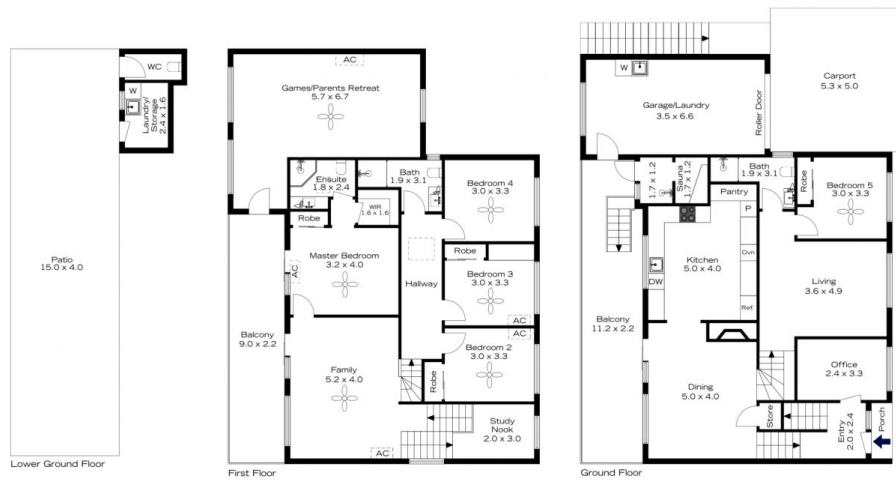
Rachel Power
02 4739 4311



James Simadas
02 4782 5045

[For full version visit the website](https://www.chapmanrealestate.com.au)

6 PLAINSVIEW CRESCENT, MOUNT RIVERVIEW



INTERNAL
247 m²

EXTERNAL
54 m²

TOTAL
301 m²



The floor plan is not to scale; measurements are indicative and in metres. Exterior elements are not in position. Plans should not be relied on. Interested parties should make and rely on their own enquiries.

6 PLAINSVIEW CRESCENT, MOUNT RIVERVIEW



INTERNAL
247 m²

EXTERNAL
54 m²

TOTAL
301 m²



The floor plan is not to scale; measurements are indicative and in metres. All features included in this 3D plan are for inspiration purposes only. This is not an exact replica of the property or the position of exterior elements. Plans should not be relied on. Interested parties should make and rely on their own enquiries.