



153 Burrawang Street Katoomba NSW

3 1 2

LOCATION - The elevated, peaceful position is just moments from Scenic World, Cliff View Lookout and the iconic Three Sisters in desirable South Katoomba. Potential access from Cliff Drive. Situated on an 823m2 (approx.) mostly useable block, set back from the road ensuring privacy. A short 6-minute (approx.) drive into Katoomba village and convenient public transport (bus stop approx. 50m). Close proximity to Katoomba Public School and St Canice's Primary School.

STYLE - Classic 1954 brick and hardwood clad cottage, with new carpet and freshly painted interiors. Large windows and French doors provide an abundance of natural lighting. Sorensen-like stone walls frame the gardens.

[For full version visit the website](https://www.chapmanrealestate.com.au)

Type : House
Price : \$ 565,000
Land Size : 823 sqm
View : <https://www.chapmanrealestate.com.au/sale/nsw/blue-mountains-surrounds/katoomba/residential/house/7161108>



Jonathan Crisp
02 4751 8266

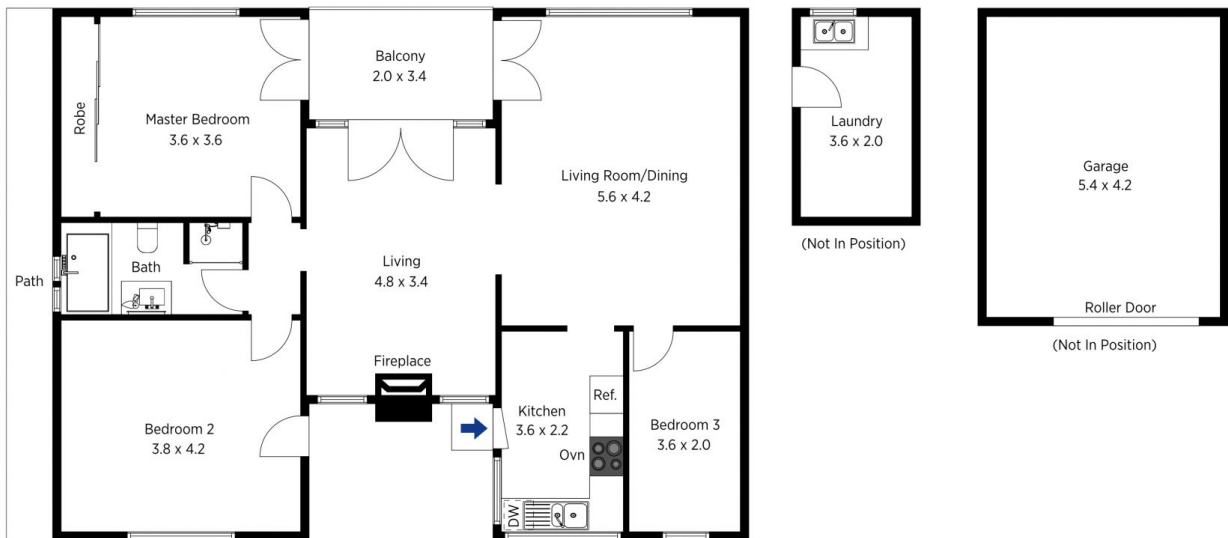


The floor plan is not to scale, measurements are indicative and in metres. All features included in this 3D plan are for inspiration purposes only. This is not an exact replica of the property or the position of exterior elements. Plans should not be relied on. Interested parties should make and rely on their own enquiries.

Produced by DIAKRIT

153 Burrawang Street, Katoomba

Chapman



The floor plan is not to scale, measurements are indicative and in metres. Exterior elements are not in position. Plans should not be relied on. Interested parties should make and rely on their own enquiries.

Produced by DIAKRIT

153 Burrawang Street, Katoomba

Chapman