



## 27 Shamrock Close Winmalee NSW

5 3 2

**LOCATION** - Privately set and yet conveniently located within 1.5km of popular Winmalee schools, shopping centre, parks and bush walks, 350m to bus.

**STYLE** - 'Sheiling' is a versatile and luxurious multi level lifestyle property of brick construction with colourbond roof, timber features and stunning landscaped gardens, all elegantly positioned on over two acres (approximately 8,943m<sup>2</sup>) of prime Blue Mountains land.

**LAYOUT** - Five separate living spaces, grand lounge, formal dining, generous office (possible 6th bedroom), open family/dining and additional guest dining. Five bedrooms, master with ensuite, walk in robe and private balcony, three additional upstairs double bedrooms with bush views and downstairs a huge private fifth bedroom, ideal for guest accommodation. Three stunning bathrooms;

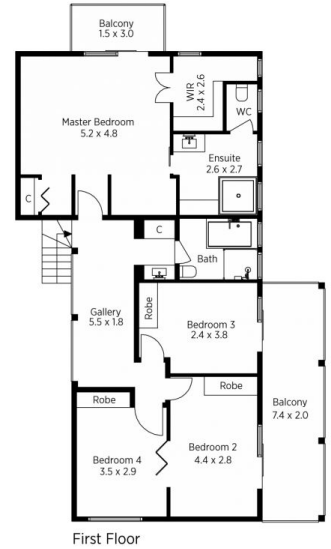
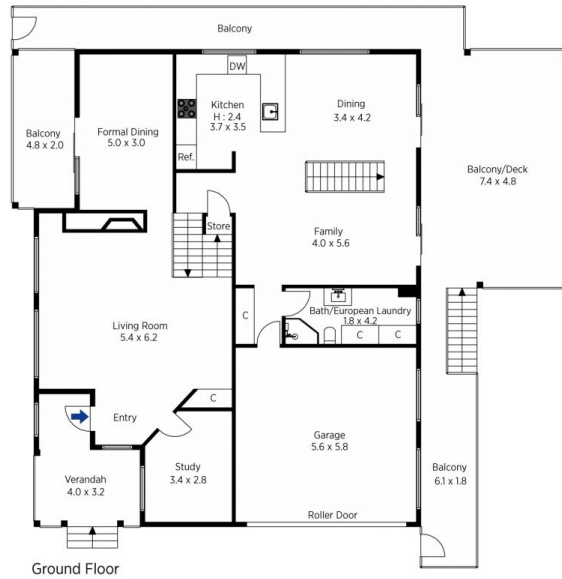
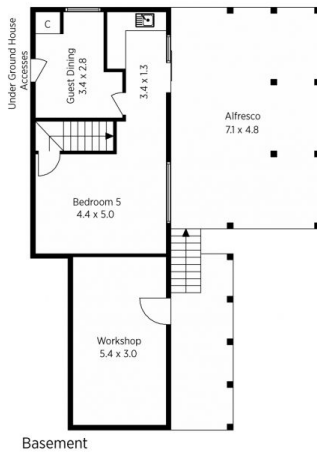
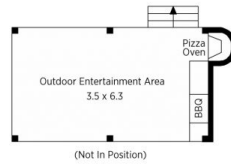
**Type** : House  
**Price** : \$ 1,125,000  
**Land Size** : 8943 sqm  
**View** : <https://www.chapmanrealestate.com.au/sale/nsw/hawkesbury/winmalee/residential/house/7161092>



**Helen Harris**  
02 4751 8266

[For full version visit the website](https://www.chapmanrealestate.com.au)

<https://www.chapmanrealestate.com.au>

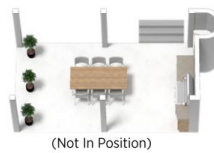


The floor plan is not to scale; measurements are indicative and in metres. Exterior elements are not in position. Plans should not be relied on. Interested parties should make and rely on their own enquiries.

Produced by DIAKRIT

27 Shamrock Close, Winmalee

Chapman



The floor plan is not to scale; measurements are indicative and in metres. All features included in this 3D plan are for inspiration purposes only. This is not an exact replica of the property or the position of exterior elements. Plans should not be relied on. Interested parties should make and rely on their own enquiries.

Produced by DIAKRIT

27 Shamrock Close, Winmalee

Chapman