



6 Valley Road SPRINGWOOD NSW

2 1

LOCATION - A highly popular and convenient location with rail, shops and services all within 750 metres.

STYLE - Faithful older style clad home on a fabulous 1,460m² (approx) gently sloping parcel of Blue Mountains beauty.

LAYOUT - Large open plan living, functional kitchen, 2 bedrooms.

FEATURES - Currently leased, this perfectly situated home opens huge potential for all the right reasons. Move in and plan for the future or renovate, extend or rebuild. (STCA)

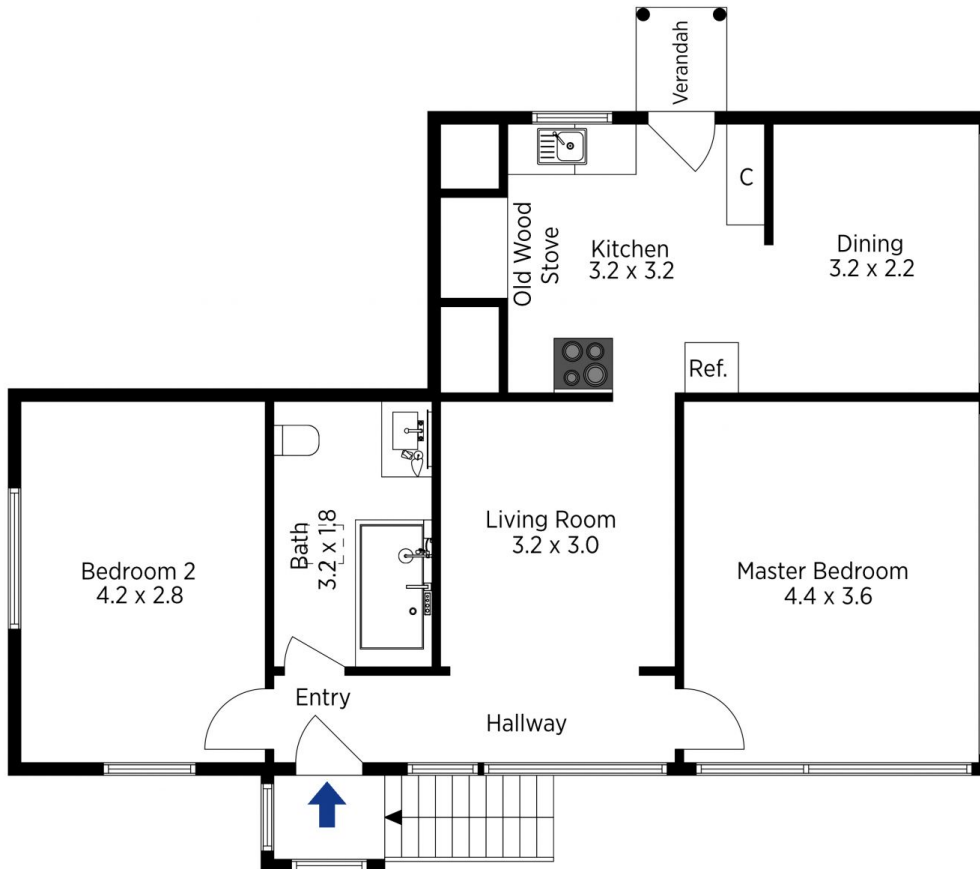
Disclaimer: All information contained herein is gathered from sources we believe to be reliable. However, we cannot guarantee its accuracy and interested persons should rely on their own enquiries.

[For full version visit the website](https://www.chapmanrealestate.com.au/sale/nsw/hawkesbury/springwood/residential/home/7161090)

Type : House
Price : \$ 475,000
Land Size : 1260 sqm
View : <https://www.chapmanrealestate.com.au/sale/nsw/hawkesbury/springwood/residential/home/7161090>



James Simadas
02 4782 5045



The floor plan is not to scale; measurements are indicative and in metres. Exterior elements are not in position. Plans should not be relied on. Interested parties should make and rely on their own enquiries.

Produced by DIAKRIT

6 Valley Road, Springwood

Chapman



The floor plan is not to scale; measurements are indicative and in metres. All features included in this 3D plan are for inspiration purposes only. This is not an exact replica of the property or the position of exterior elements. Plans should not be relied on. Interested parties should make and rely on their own enquiries.

Produced by DIAKRIT

6 Valley Road, Springwood

Chapman