



6 Grey Street Glenbrook NSW

4 3 1

LOCATION - Situated in one of the most sought after suburbs of the Blue Mountains, this upper east-side Glenbrook village home is nestled on the edge of the National Park. Set on a magnificent, private, bush block of approx. 1,334sqm, and set only moments from the heart of the village. Enjoy the peaceful setting in a lifestyle rich location just steps away from the local walking track providing a short walk to Glenbrook Rail.

STYLE - Radiating personality & warmth, this architect designed 1970's home is spread over 2 levels. Purpose built with walls of glass capturing intimate valley & village views.

LAYOUT - Entry level interiors offer a warm and inviting ambience, versatile open plan living and dining areas free flow into the kitchen, alfresco dining & timber deck

Type : House
Price : \$ 1,125,000
Land Size : 1333 sqm
View : <https://www.chapmanrealestate.com.au/sale/nsw/blue-mountains-surrounds/glenbrook/residential/house/7161087>



Milton Player
02 4739 4311

[For full version visit the website](https://www.chapmanrealestate.com.au)

<https://www.chapmanrealestate.com.au>



Ground Floor



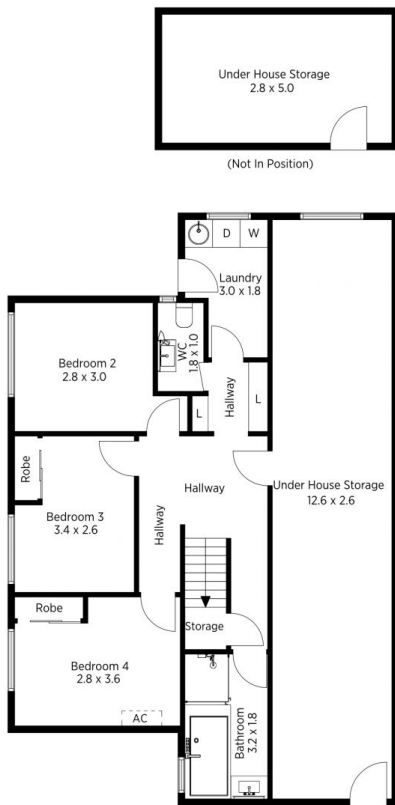
1st Floor

The floor plan is not to scale; measurements are indicative and in metres. All features included in this 3D plan are for inspiration purposes only. This is not an exact replica of the property or the position of exterior elements. Plans should not be relied on. Interested parties should make and rely on their own enquiries.

Produced by DIAKRIT

6 Grey Street, Glenbrook

Chapman



Ground Floor



1st Floor

The floor plan is not to scale; measurements are indicative and in metres. Exterior elements are not in position. Plans should not be relied on. Interested parties should make and rely on their own enquiries.

Produced by DIAKRIT

6 Grey Street, Glenbrook

Chapman