



89 Paterson Road Springwood NSW

5 🛏 3 🚿 2 🚗

LOCATION - Privately positioned down a driveway on highly popular Springwood street, this large family home with granny flat and bush views is set on a generous 1720 m2 block, within 3.5km to village, cafes, shops & train, 1km from local school & bus stop.

STYLE - Single level brick home with tile roof and separate cottage style granny flat with colourbond roof.

LAYOUT - House: 2 separate living spaces, large open central kitchen with butlers pantry, 4 bedrooms, main with ensuite & walk in robe, 3 further good size bedrooms (2 with built ins), generous main bathroom & separate toilet, large internal laundry with external access. Granny Flat: Large open living/dining/kitchenette (gas cooking), with separate bedroom & ensuite.

FEATURES - Contemporary kitchen with tile splashback &

Type : House
Price : \$ 880,000
Land Size : 1720 sqm
View : <https://www.chapmanrealestate.com.au/sale/nsw/hawkesbury/springwood/residential/house/7161073>



Helen Harris
02 4751 8266



Jonathan Crisp
02 4751 8266

[For full version visit the website](https://www.chapmanrealestate.com.au)

<https://www.chapmanrealestate.com.au>



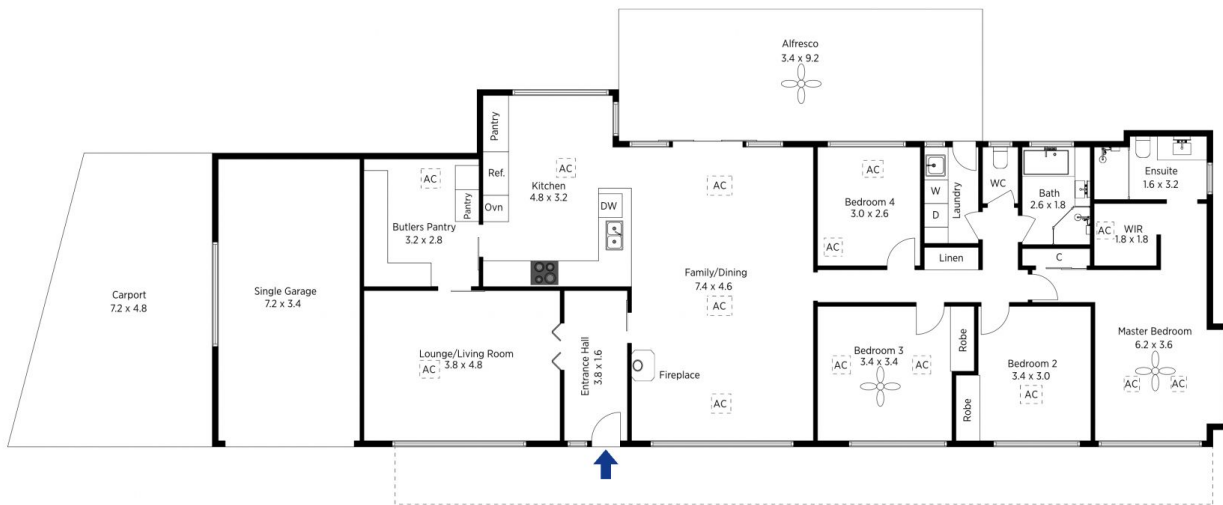
Granny Flat

The floor plan is not to scale; measurements are indicative and in metres. All features included in this 3D plan are for inspiration purposes only. This is not an exact replica of the property or the position of exterior elements. Plans should not be relied on. Interested parties should make and rely on their own enquiries.

Produced by DIAKRIT

89 Paterson Road, Springwood

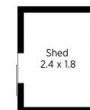
Chapman



Granny Flat



(Not in Position)



(Not in Position)

The floor plan is not to scale; measurements are indicative and in metres. Exterior elements are not in position. Plans should not be relied on. Interested parties should make and rely on their own enquiries.

Produced by DIAKRIT

89 Paterson Road, Springwood

Chapman