



6 Roosevelt Street Leura NSW

3 1 3

LOCATION - Positioned in a peaceful, private street. Approx. 999m2 of usable land, located on the high side complete filtered bush views. Just a short 3 minutes drive to local shops and boutiques in Leura Mall. Leura Public School is an approx. 16 minutes walk via Victory lane.

STYLE - An immaculate, contemporary style brick home, with timber floor throughout the kitchen area and large windows capturing the natural light. Newly renovated kitchen and bathroom.

LAYOUT - The home consists of three bedrooms, the master is complete with a built in wardrobe. Entertaining deck off kitchen and veranda off the lounge room.

Type : House
Price : \$ 595,000
Land Size : 999 sqm
View : <https://www.chapmanrealestate.com.au/sale/nsw/blue-mountains-surrounds/leura/residential/house/7161050>



Jonathan Crisp
02 4751 8266

[For full version visit the website](https://www.chapmanrealestate.com.au)

<https://www.chapmanrealestate.com.au>

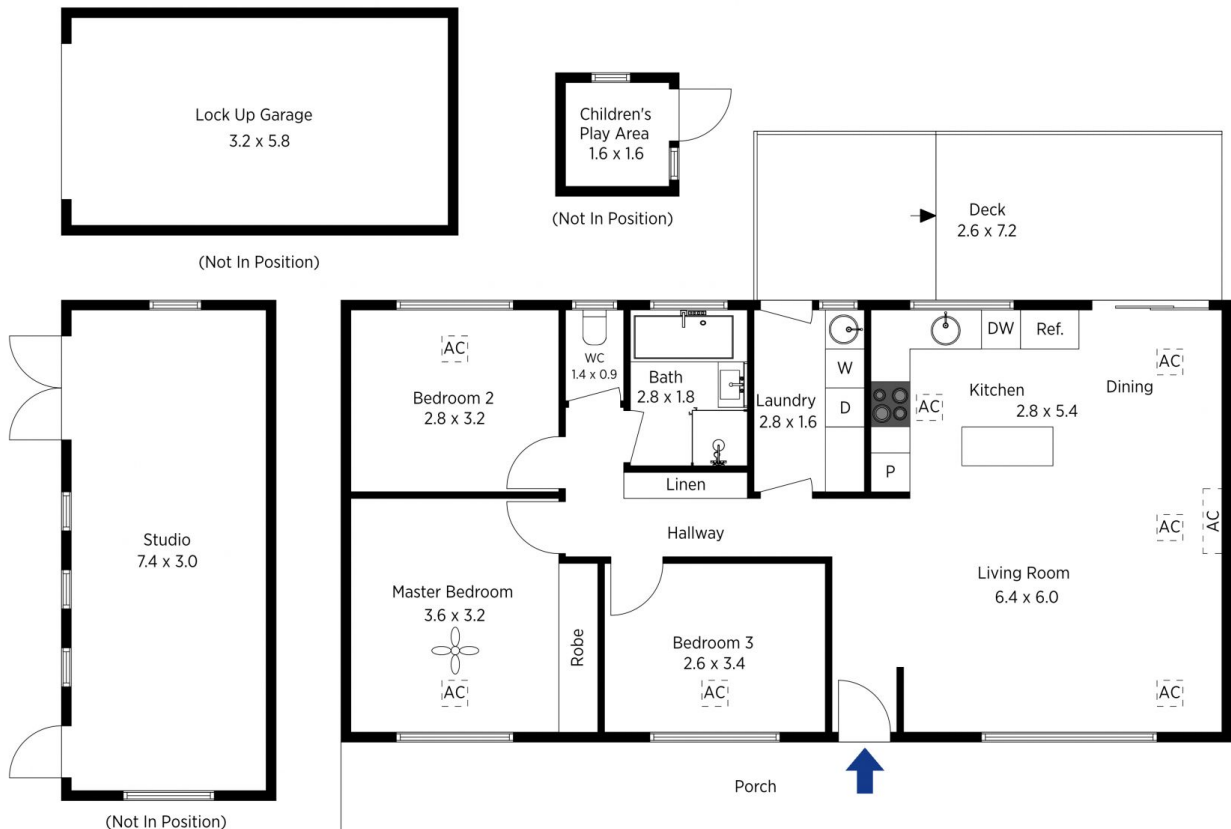


The floor plan is not to scale; measurements are indicative and in metres. All features included in this 3D plan are for inspiration purposes only. This is not an exact replica of the property or the position of exterior elements. Plans should not be relied on. Interested parties should make and rely on their own enquiries.

Produced by DIAKRIT

6 Roosevelt Street, Leura

Chapman



The floor plan is not to scale; measurements are indicative and in metres. Exterior elements are not in position. Plans should not be relied on. Interested parties should make and rely on their own enquiries.

Produced by DIAKRIT

6 Roosevelt Street, Leura

Chapman