

### 56 Bedford Road Woodford NSW

3 2

**LOCATION** - Nestled on a large and peaceful 1965m2 block, just a 10 minute walk to the bus stop and train station.

**STYLE** - Classic Mountains cottage with French doors opening onto long verandas, set centrally amongst a well established, low maintenance garden.

**LAYOUT** - Simple design incorporating two separate living spaces, kitchen, family bathroom with a separate shower and toilet in the shared laundry space.

**FEATURES** - Good sized galley kitchen with solid timber cabinetry and stainless steel appliances. Three generous sized bedrooms, all with French doors leading out to the

**Type** : House  
**Price** : \$ 665,000  
**Land Size** : 1965 sqm  
**View** : <https://www.chapmanrealestate.com.au/sale/nsw/blue-mountains-surrounds/woodford/residential/house/7161049>



**Jonathan Crisp**  
02 4751 8266

[For full version visit the website](https://www.chapmanrealestate.com.au)

<https://www.chapmanrealestate.com.au>

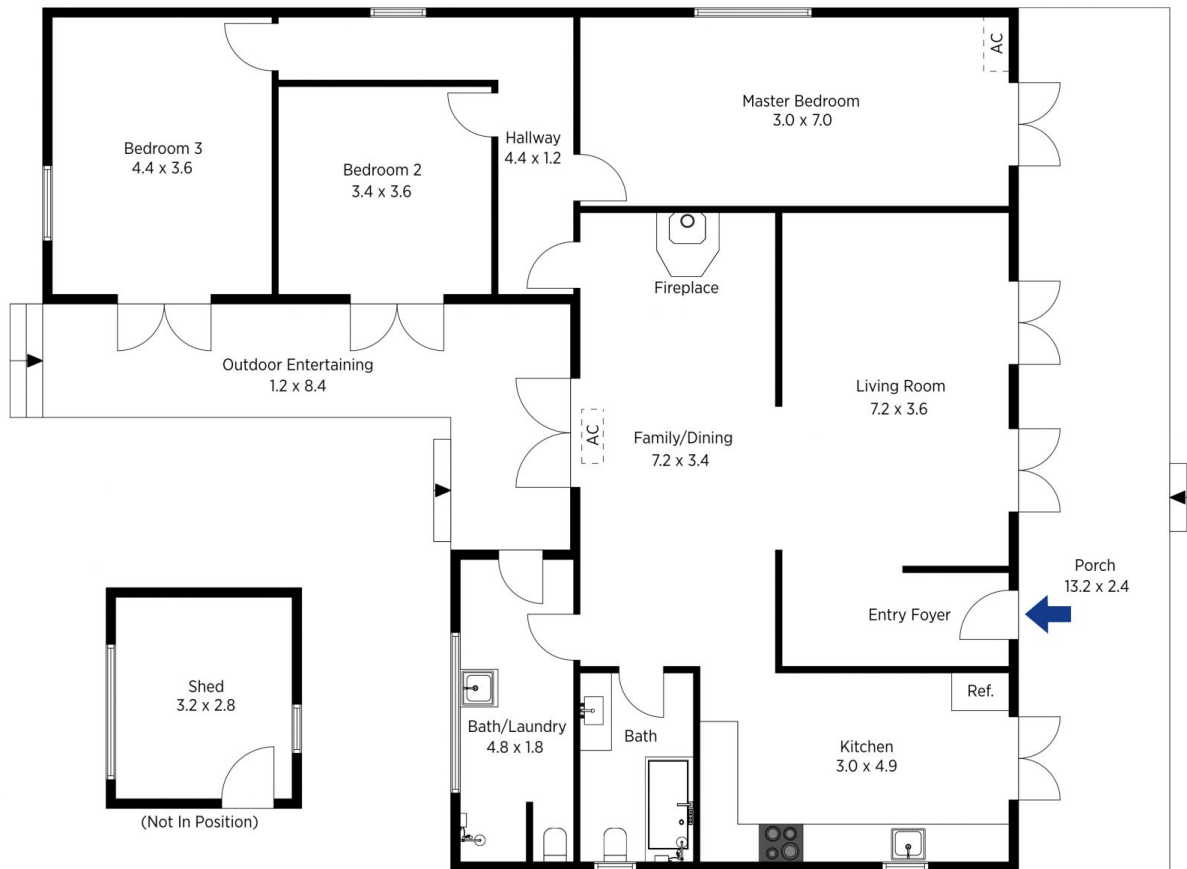


The floor plan is not to scale; measurements are indicative and in metres. All features included in this 3D plan are for inspiration purposes only. This is not an exact replica of the property or the position of exterior elements. Plans should not be relied on. Interested parties should make and rely on their own enquiries.

Produced by DIAKRIT

56 Bedford Road, Woodford

Chapman



The floor plan is not to scale; measurements are indicative and in metres. Exterior elements are not in position. Plans should not be relied on. Interested parties should make and rely on their own enquiries.

Produced by DIAKRIT

56 Bedford Road, Woodford

Chapman