



## 27 Powell Street Blaxland NSW

4 2 2

**LOCATION** - Set on a magnificent 9532 approx. block, enjoying idyllic bush land rear, bush tracks to discover and magnificent treetop outlook. Perfectly positioned, right on the border of Glenbrook Village West and walking distance to Glenbrook swimming pool, local high school, Lapstone hotel, shops, restaurants, bus, Glenbrook and St Finbars public schools, rail services, Glenbrook Village, ovals, playground, dog park, Bowling club, cinema, tennis courts, skate park, and bush walks.

**STYLE** - Masterfully crafted, grandiose 44 square, 2-year-old lifestyle contemporary. Built by renowned Wincrest Homes. Relaxed, views, expansive and luxurious, the perfect quadrella.

**LAYOUT** - 2 great sized rear-facing atmospheric living rooms, both facing to rear, 4 bedrooms (all with built ins),

**Type** : House  
**Price** : \$ 1,750,000  
**Land Size** : 9532 sqm  
**View** : <https://www.chapmanrealestate.com.au/sale/nsw/blue-mountains-surrounds/blaxland/residential/house/7161036>



**Milton Player**  
02 4739 4311

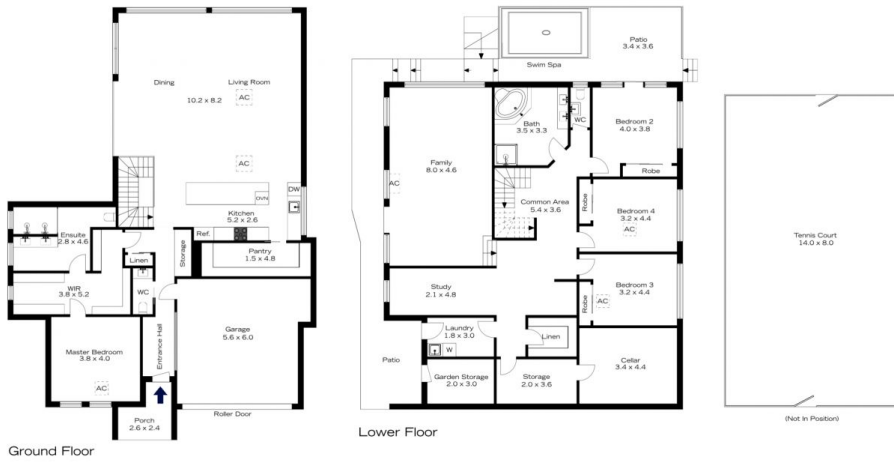


**Rachel Power**  
02 4739 4311

[For full version visit the website](https://www.chapmanrealestate.com.au)

<https://www.chapmanrealestate.com.au>

## 27 POWELL STREET, BLAXLAND



**INTERNAL**  
353 m<sup>2</sup>

**EXTERNAL**  
64 m<sup>2</sup>

**TOTAL**  
417 m<sup>2</sup>

The floor plan is not to scale; measurements are indicative and in metres. Exterior elements are not in position. Plans should not be relied on. Interested parties should make and rely on their own enquiries.



## 27 POWELL STREET, BLAXLAND



**INTERNAL**  
353 m<sup>2</sup>

**EXTERNAL**  
64 m<sup>2</sup>

**TOTAL**  
417 m<sup>2</sup>

The floor plan is not to scale; measurements are indicative and in metres. All features included in this 3D plan are for inspiration purposes only. This is not an exact replica of the property or the position of exterior elements. Plans should not be relied on. Interested parties should make and rely on their own enquiries.

