



2 Sandbox Road Wentworth Falls NSW

3 1 1

LOCATION - Set on a service road with two street frontages (second access from Sandbox Road), just a 1.6km walk to train and 260m to bus, convenient to shops, schools, lookouts.

STYLE - Single level home of brick and tile construction on a 720m² (approx.) block.

LAYOUT - Living open to dining and updated bathroom, three bedrooms, renovated bathroom, internal laundry.

FEATURES - Two reverse cycle air conditioners, natural gas heating, carpet throughout with floorboards beneath, gas hot water, under covered entertaining deck, studio with power, under house storage, fully fenced usable grassy

[For full version visit the website](https://www.chapmanrealestate.com.au)

Type : House
Price : \$ 450,000
Land Size : 720 sqm
View : <https://www.chapmanrealestate.com.au/sale/nsw/blue-mountains-surrounds/wentworth-falls/residential/house/7161028>



Mark Poole
02 4751 8266

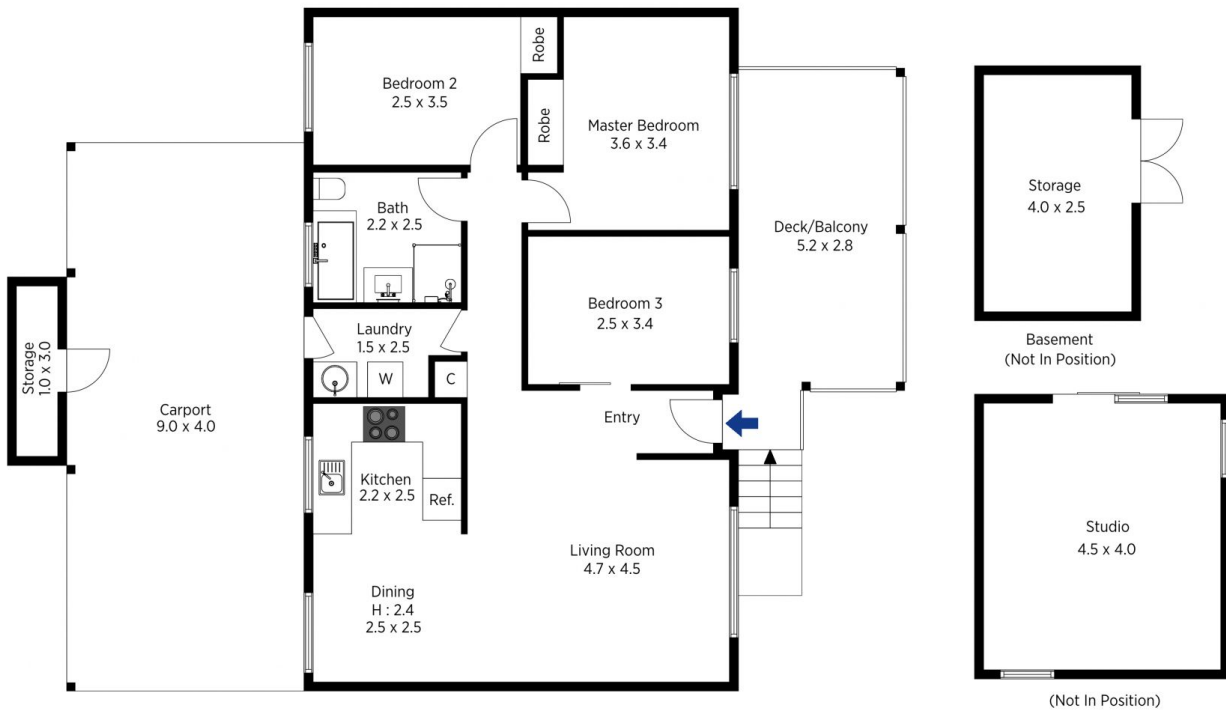


The floor plan is not to scale; measurements are indicative and in metres. All features included in this 3D plan are for inspiration purposes only. This is not an exact replica of the property or the position of exterior elements. Plans should not be relied on. Interested parties should make and rely on their own enquiries.

Produced by DIAKRIT

76 Great Western Highway, Wentworth Falls

Chapman



The floor plan is not to scale; measurements are indicative and in metres. Exterior elements are not in position. Plans should not be relied on. Interested parties should make and rely on their own enquiries.

Produced by DIAKRIT

76 Great Western Highway, Wentworth Falls

Chapman