



#### 4 Newton Way Winmalee NSW

3 1 1

**LOCATION** - This beautiful family home is situated in a quiet pocket of Winmalee, only moments' drive to Winmalee Shops, schools and picturesque bush trails. Enjoy quick and easy access to the M4 Motorway or take the scenic route down the mountain and through Yarramundi to reach Penrith.

**STYLE** - Lovingly maintained, this home has been tastefully updated over time. It features floating timber floors in the living, dining and kitchen, and the bedrooms are all carpeted. The kitchen is awash with light, and features a stainless steel, electric stove, as well as chic high gloss cupboards. This home has a modern colour palette throughout, as well as a lovely open floor plan.

**Type** : Semi Detached  
**Price** : \$ 751,495  
**Land Size** : 382 sqm  
**View** : <https://www.chapmanrealestate.com.au/sale/nsw/hawkesbury/winmalee/residential/semi-detached/7161019>



**Kate Spence**  
02 4739 6200



**Chris Rayner**  
02 4739 6200

[For full version visit the website](https://www.chapmanrealestate.com.au)

<https://www.chapmanrealestate.com.au>

4 NEWTON WAY, WINMALEE



Ground Floor

INTERNAL  
91 m<sup>2</sup>

EXTERNAL  
14 m<sup>2</sup>

TOTAL  
105 m<sup>2</sup>

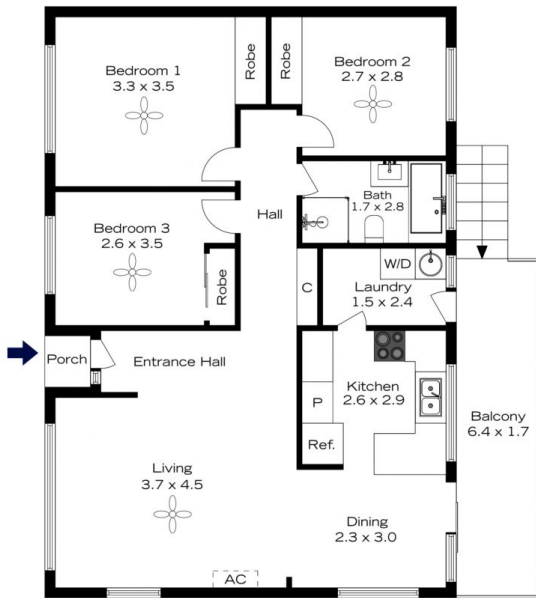


The floor plan is not to scale; measurements are indicative and in metres. All features included in this 3D plan are for inspiration purposes only. This is not an exact replica of the property or the position of exterior elements. Plans should not be relied on. Interested parties should make and rely on their own enquiries.



Lower Ground Floor

4 NEWTON WAY, WINMALEE



Ground Floor

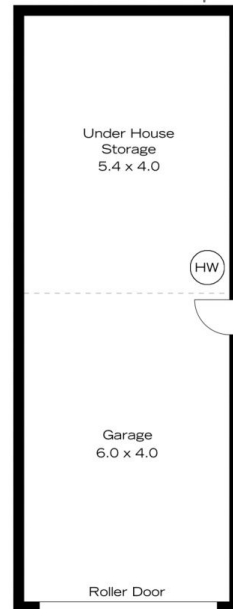
INTERNAL  
91 m<sup>2</sup>

EXTERNAL  
14 m<sup>2</sup>

TOTAL  
105 m<sup>2</sup>



The floor plan is not to scale; measurements are indicative and in metres. Exterior elements are not in position. Plans should not be relied on. Interested parties should make and rely on their own enquiries.



Lower Ground Floor