

27 Nightingale Drive Blaxland NSW

4 2 2

LOCATION - Private and commanding position set at the end of an exclusive cul de sac. Walk to local oval, park, netball and basketball courts and gym.

STYLE - Attractive brick and tile residence in immaculate condition and a quality feel throughout.

LAYOUT - Sunny living room, huge separate dining/family room, 4 double bedrooms all with built-in robes, 2.5 bathrooms including ensuite off master.

FEATURES - Renovated kitchen with stone counter tops, Bosch dishwasher and induction cooking, ducted reverse cycle air conditioning, vinyl plank flooring, rear deck, big, fully fenced back yard, oversized double garage and side access to rear yard (perfect for building pool, sheds, caravan, boat etc.).

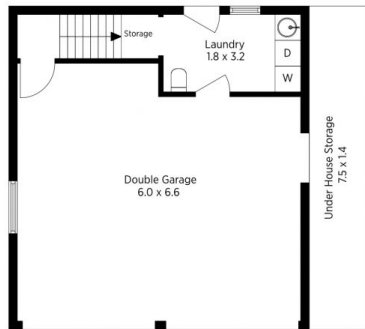
Type : House
Price : \$ 830,000
Land Size : 883 sqm
View : <https://www.chapmanrealestate.com.au/sale/nsw/blue-mountains-surrounds/blaxland/residential/house/7161009>



Milton Player
02 4739 4311

[For full version visit the website](https://www.chapmanrealestate.com.au)

<https://www.chapmanrealestate.com.au>



Ground Floor



1st Floor

The floor plan is not to scale; measurements are indicative and in metres. Exterior elements are not in position. Plans should not be relied on. Interested parties should make and rely on their own enquiries.

Produced by DIAKRIT

27 Nightingale Drive, Blaxland

Chapman



Ground Floor



1st Floor

The floor plan is not to scale; measurements are indicative and in metres. All features included in this 3D plan are for inspiration purposes only. This is not an exact replica of the property or the position of exterior elements. Plans should not be relied on. Interested parties should make and rely on their own enquiries.

Produced by DIAKRIT

27 Nightingale Drive, Blaxland

Chapman