



## 2 Wilson Way Blaxland NSW

5 1 1

**LOCATION** - R2 zoned and set on a reasonably level and wide 972m2 approx block within walking distance to rail services, bus, supermarket, shops, and local school.

**STYLE** - Single level cottage with loads of charm and character with loads of potential for further development, if desired, via its advantageous zoning.

**LAYOUT** - Large living room, dining room (or 2nd living area), 4 bedrooms plus study (3 with built-ins, all with ceiling fans), bathroom with separate toilet.

**FEATURES** - Generous open plan timber kitchen, polished timber floorboards, reverse cycle air conditioning, great sized rooms, covered screen enclosed porch, reasonably fully fenced level yard, covered paved alfresco, separate studio, circular drive, carport.

**Type** : House  
**Price** : \$ 860,000  
**Land Size** : 973.8 sqm  
**View** : <https://www.chapmanrealestate.com.au/sale/nsw/blue-mountains-surrounds/blaxland/residential/house/7160995>



**Milton Player**  
02 4739 4311

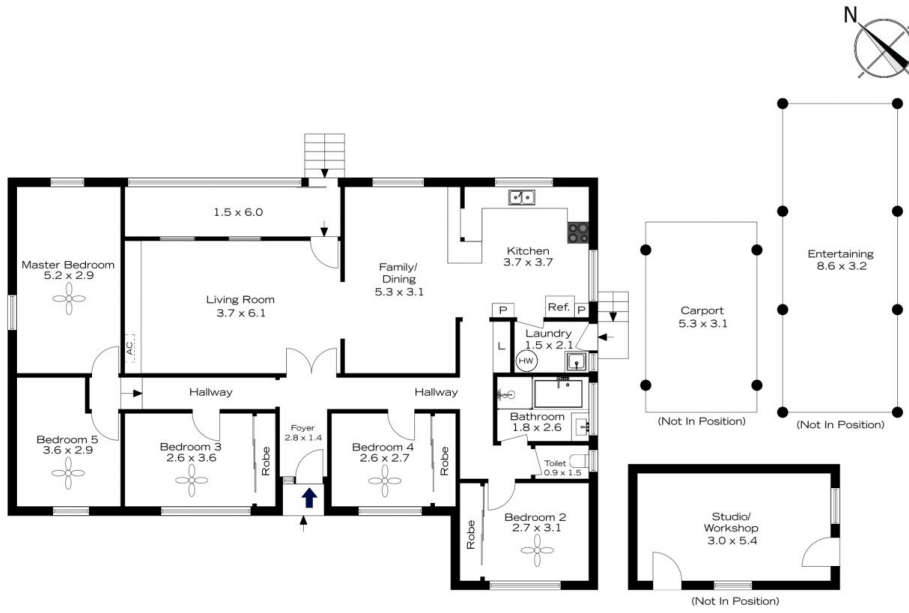


**Rachel Power**  
02 4739 4311

[For full version visit the website](https://www.chapmanrealestate.com.au)

<https://www.chapmanrealestate.com.au>

# 2 WILSON WAY, BLAXLAND



INTERNAL  
148 m<sup>2</sup>

EXTERNAL  
2 m<sup>2</sup>

TOTAL  
150 m<sup>2</sup>



The floor plan is not to scale; measurements are indicative and in metres. Exterior elements are not in position. Plans should not be relied on. Interested parties should make and rely on their own enquiries.

# 2 WILSON WAY, BLAXLAND



INTERNAL  
148 m<sup>2</sup>

EXTERNAL  
2 m<sup>2</sup>

TOTAL  
150 m<sup>2</sup>



The floor plan is not to scale; measurements are indicative and in metres. All features included in this 3D plan are for inspiration purposes only. This is not an exact replica of the property or the position of exterior elements. Plans should not be relied on. Interested parties should make and rely on their own enquiries.