

332 Great Western Highway Bullaburra NSW

4 1 1

LOCATION - Set on a large block with a bush outlook, moments away from shops, schools, parks, 190m to bus and 750m to train.

STYLE - Single level cottage of clad construction and a metal roof on a 1,119m² (approx.) block.

LAYOUT - Spacious L shape family/dining/living area, 4 bedrooms, updated kitchen with large walk-in pantry, updated bathroom, internal laundry with 2nd toilet.

FEATURES - Tall ceilings, carpet throughout, gas heating, large windows, light filled, large fully fenced yard, garden shed, single car lock up garage.

Type : House
Price : \$ 527,500
Land Size : 1119 sqm
View : <https://www.chapmanrealestate.com.au/sale/nsw/blue-mountains-surrounds/bullaburra/residential/house/7160991>



Jonathan Crisp
02 4751 8266



Mark Poole
02 4751 8266

[For full version visit the website](https://www.chapmanrealestate.com.au)

<https://www.chapmanrealestate.com.au>

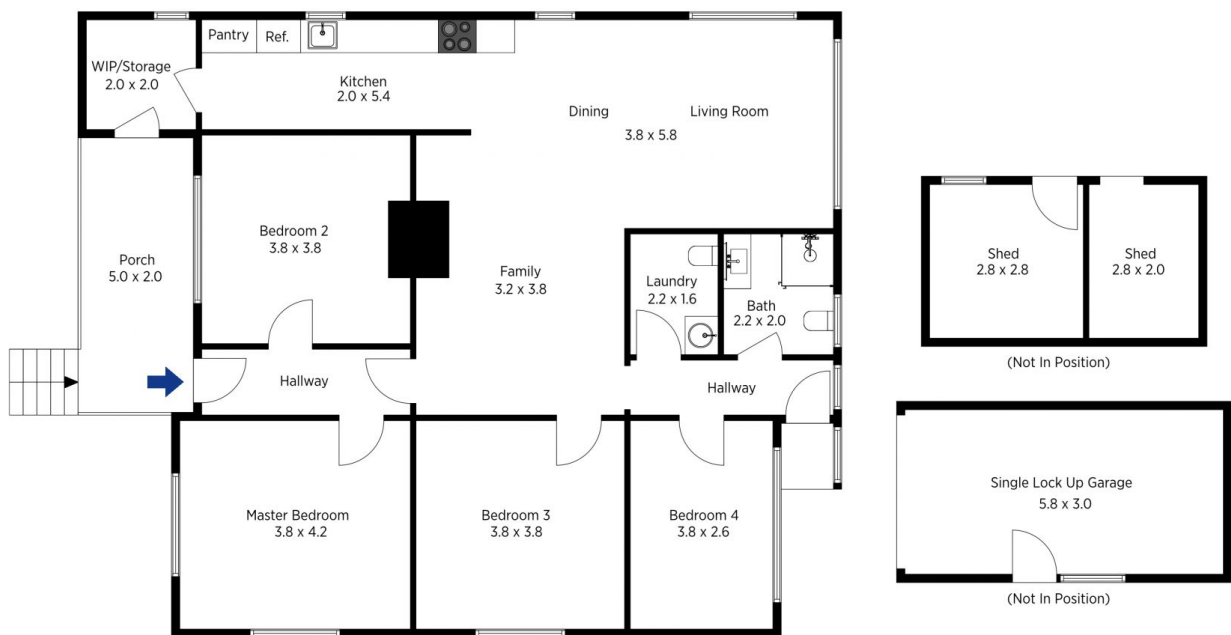


The floor plan is not to scale; measurements are indicative and in metres. All features included in this 3D plan are for inspiration purposes only. This is not an exact replica of the property or the position of exterior elements. Plans should not be relied on. Interested parties should make and rely on their own enquiries.

Produced by DIAKRIT

332 Great Western Highway, Bullaburra

Chapman



The floor plan is not to scale; measurements are indicative and in metres. Exterior elements are not in position. Plans should not be relied on. Interested parties should make and rely on their own enquiries.

Produced by DIAKRIT

332 Great Western Highway, Bullaburra

Chapman