



## 22 Darwin Drive Lapstone NSW

3 1 1

**LOCATION** - High set and positioned along a private laneway, yielding a secluded and peaceful feel. Quick and easy access to M4. Walk to rail and bus services and bush walks. Set on an approx 1151 sq m allotment.

**STYLE** - Sunlit single level brick and tile partly renovated home with filtered views, and magnificent feel throughout.

**LAYOUT** - 2 living rooms, dining, 3 bedrooms, all with built ins.

**FEATURES** - Open plan renovated kitchen with large stone Island bench, stainless steel Ilve and Miele appliances. Ducted reverse cycle air conditioning, polished timberstyle flooring, high ceilings, timber windows, paved alfresco area, mature plantings, open areas, outdoor deck, lock up garage plus plenty of extra parking.

**Type** : House  
**Price** : \$ 928,000  
**Land Size** : 1151 sqm  
**View** : <https://www.chapmanrealestate.com.au/sale/nsw/blue-mountains-surrounds/lapstone/residential/house/7160989>



**Milton Player**  
02 4739 4311



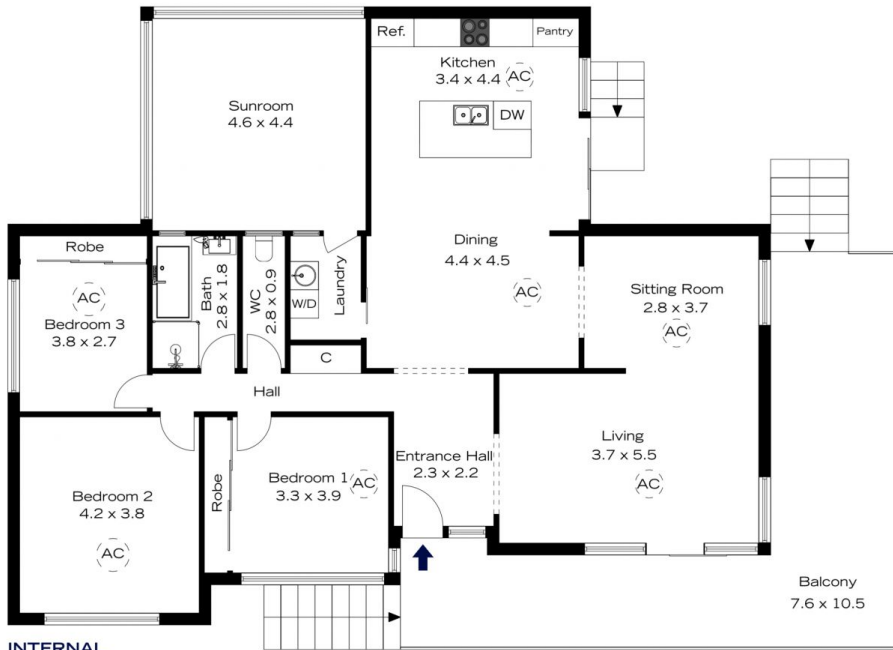
**Sharon Lampert**  
02 4739 4311

[For full version visit the website](https://www.chapmanrealestate.com.au)

<https://www.chapmanrealestate.com.au>



22 DARWIN DRIVE, LAPSTONE



**INTERNAL**  
165 m<sup>2</sup>

**EXTERNAL**  
41 m<sup>2</sup>

**TOTAL**  
206 m<sup>2</sup>

The floor plan is not to scale; measurements are indicative and in metres. Exterior elements are not in position. Plans should not be relied on. Interested parties should make and rely on their own enquiries.



22 DARWIN DRIVE, LAPSTONE



**INTERNAL**  
165 m<sup>2</sup>

**EXTERNAL**  
41 m<sup>2</sup>

**TOTAL**  
206 m<sup>2</sup>

The floor plan is not to scale; measurements are indicative and in metres. All features included in this 3D plan are for inspiration purposes only. This is not an exact replica of the property or the position of exterior elements. Plans should not be relied on. Interested parties should make and rely on their own enquiries.

