



1/45 Grand View Drive Mount Riverview NSW

3 2 1

LOCATION - This grand-designed 3 bedroom duplex is positioned on the high side of the street, capturing stunning views of Penrith Lakes and Sydney city skyline. The address is on Grand View Drive, but the home faces into Plainsview Crescent, a lovely quiet cul-de-sac tucked away in a peaceful pocket of Mount Riverview. Schools, shops, cafes, and public transport are all a short drive from home, and bush walks are easily accessible.

STYLE - This double brick home was built circa 1990s, and features beautiful high timber ceilings, timber window frames, and a lovely traditional timber kitchen with stained glass pantry cupboards. There are some exposed brick walls internally adding to the charm of the home.

[For full version visit the website](#)

Type : Semi Detached
Price : \$ 828,885
Land Size : 389 sqm
View : <https://www.chapmanrealestate.com.au/sale/nsw/hawkesbury/mount-riverview/residential/semi-detached/7160954>

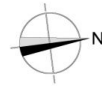


Kate Spence
02 4739 6200



Chris Rayner
02 4739 6200

1/45 GRAND VIEW DRIVE, MOUNT RIVERVIEW



First Floor



Ground Floor

INTERNAL
173 m²
EXTERNAL
19 m²
TOTAL
192 m²

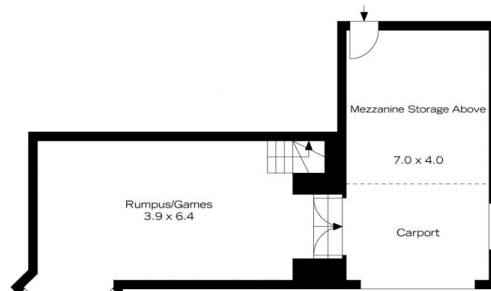


The floor plan is not to scale; measurements are indicative and in metres. All features included in this 3D plan are for inspiration purposes only. This is not an exact replica of the property or the position of exterior elements. Plans should not be relied on. Interested parties should make and rely on their own enquiries.

1/45 GRAND VIEW DRIVE, MOUNT RIVERVIEW



First Floor



Ground Floor

INTERNAL
173 m²
EXTERNAL
19 m²
TOTAL
192 m²



The floor plan is not to scale; measurements are indicative and in metres. Exterior elements are not in position. Plans should not be relied on. Interested parties should make and rely on their own enquiries.